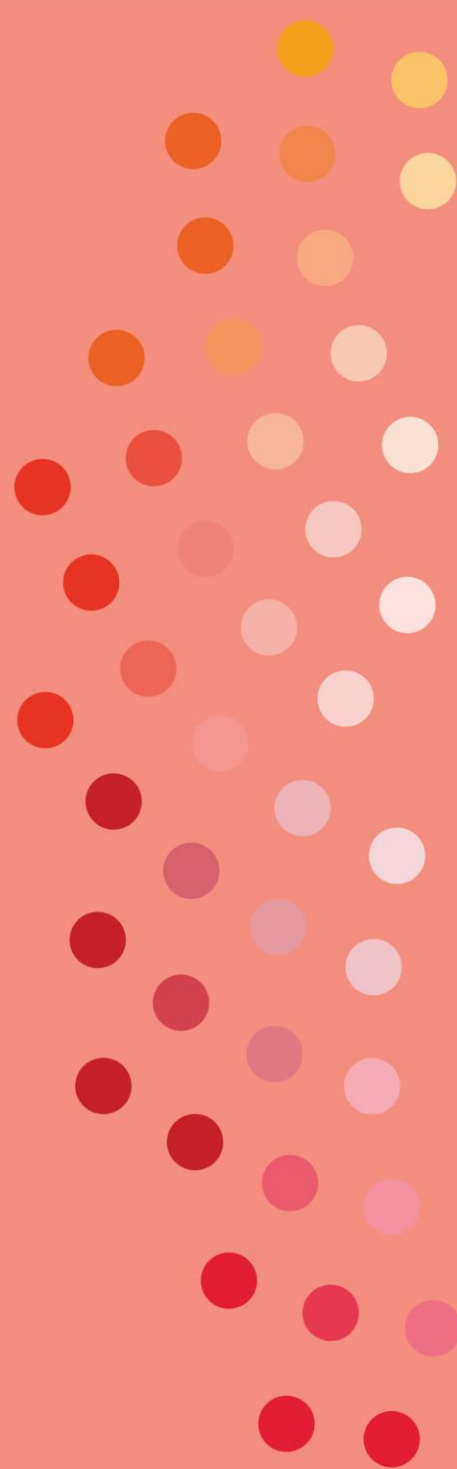




Spotlight Initiative

To eliminate violence
against women and girls



BASELINE ASSESSMENT REPORT: BELIZE

Volume III: KABP Results June 2021

PREPARED BY: IMC Worldwide
PREPARED FOR: UNICEF Belize

Contents

LIST OF TABLES	88
GENERAL DEMOGRAPHICS OF SURVEY RESPONDENTS.....	93
K1. DO YOU CONSIDER THE FOLLOWING ACTS TO BE FAMILY VIOLENCE?	95
K2. WHAT ARE SOME TYPES OF VIOLENCE AGAINST WOMEN AND GIRLS?	98
K3. WHAT ARE SOME TYPES OF VIOLENCE AGAINST MEN AND BOYS?	101
K4. HAVE YOU EVER HEARD OF ANY OF THE FOLLOWING SUPPORT SERVICES AVAILABLE TO SURVIVORS OF VIOLENCE AND THEIR FAMILIES IN YOUR COMMUNITY?	105
K5. HOW DID YOU HEAR ABOUT THE SUPPORT SERVICES?	109
K6. DO YOU THINK SURVIVORS OF VIOLENCE IN YOUR COMMUNITY KNOW WHERE TO GO FOR HELP?.....	110
A1. A MAN IS JUSTIFIED IN BEATING HIS WIFE OR PARTNER IF SHE.....	111
A2. STATE WHETHER YOU AGREE OR DISAGREE WITH THE FOLLOWING STATEMENTS RELATED TO VIOLENCE	115
A3. SURVEYOR READS: “I WILL NOW ASK FOR YOUR OPINION ABOUT RELATIONSHIPS: WHOSE RIGHT IS SEX IN A RELATIONSHIP?”	119
A4. WHO HAS THE AUTHORITY AND MAKES DECISIONS IN A HOUSEHOLD OR RELATIONSHIP?”	121
A5. IS IT THE RIGHT OF A PARENT TO PUNISH OR DISCIPLINE A CHILD?	123
A6. IF YOU NEEDED TO REPORT A SITUATION OF VIOLENCE AGAINST YOURSELF OR SOMEONE YOU KNOW, WHO WOULD YOU FEEL MOST CONFIDENT IN REPORTING THE INCIDENT TO?	126
P1. IF YOU NEEDED TO ACCESS SERVICES AS A RESULT OF GENDER-BASED VIOLENCE, WHERE WOULD YOU BE MOST COMFORTABLE ACCESSING THESE SERVICES?	130
P2. ARE YOU AWARE OF ANY ACTIVITIES IN YOUR COMMUNITY THAT ADDRESS GENDER EQUALITY/THE RIGHTS OF WOMEN AND GIRLS ESPECIALLY REGARDING SEXUALITY AND REPRODUCTIVE HEALTH OVER THE PAST 12 MONTHS?	132
P2.A. LIST THE ACTIVITIES THAT YOU WERE AWARE OF THAT RELATE TO SEXUAL AND REPRODUCTIVE HEALTH DURING THE PAST 12 MONTHS	133
P3. HAVE YOU PARTICIPATED IN ANY COMMUNITY ACTIVITIES REGARDING GENDER EQUALITY/THE RIGHTS OF WOMEN AND GIRLS ESPECIALLY REGARDING SEXUALITY AND REPRODUCTION IN THE PAST 12 MONTHS?	134
P3.A. LIST ACTIVITIES THAT YOU HAVE PARTICIPATED IN DURING THE LAST 12 MONTHS.....	135

P4. HOW OFTEN DID YOU ATTEND THESE ACTIVITIES IN THE PAST 12 MONTHS?	136
P5. ARE YOU AWARE OF ANY ACTIVITIES IN YOUR COMMUNITY THAT ADDRESS GENDER EQUALITY/THE RIGHTS OF WOMEN AND GIRLS ESPECIALLY REGARDING ADDRESSING VIOLENCE IN RELATIONSHIPS BETWEEN MEN AND WOMEN/GIRLS IN THE PAST 12 MONTHS?	137
P5.A. LIST ACTIVITIES THAT YOU ARE AWARE OF THAT ADDRESS VIOLENCE IN RELATIONSHIPS BETWEEN MEN AND WOMEN/GIRLS DURING THE PAST 12 MONTHS	137
P6. HAVE YOU PARTICIPATED IN ANY OF THE ACTIVITIES IN YOUR COMMUNITY ADDRESSING VIOLENCE IN RELATIONSHIPS BETWEEN MEN AND WOMEN/GIRLS IN THE PAST 12 MONTHS?	138
P6.A. LIST THE ACTIVITIES THAT YOU HAVE PARTICIPATED IN DURING THE PAST 12 MONTHS.	139
P7. HOW OFTEN DID YOU ATTEND THESE ACTIVITIES IN THE PAST 12 MONTHS?	139
P8. OF ALL THE ACTIVITIES YOU WERE AWARE OF, HOW MANY OF THE PLANNED ACTIVITIES DID YOU ATTEND?	140
P10. DID YOU ATTEND ANY OF THESE ACTIVITIES WITH YOUR PARTNER OR ON YOUR OWN?	140
P11. WHY HAVE YOU NOT PARTICIPATED IN ANY OF THE ACTIVITIES IN YOUR COMMUNITY ADDRESSING VIOLENCE IN RELATIONSHIPS BETWEEN MEN AND WOMEN/GIRLS IN THE PAST 12 MONTHS?	141
P12. IN YOUR DAILY LIFE OVER THE PAST 12 MONTHS, HAVE YOU HEARD OR SEEN ANYTHING THAT STEREOTYPES WOMEN OR GIRLS OR CREATES OR REINFORCES HARMFUL SOCIAL BELIEFS OR PRACTICES FOR WOMEN AND GIRLS?	142
P13. PLEASE TELL US HOW OR WHERE YOU HEARD OR SAW ANYTHING RELATED TO STEREOTYPING	144
P14. WHAT DO YOU DO IF YOU WITNESS, HEAR ABOUT, OR LEARN OF DOMESTIC VIOLENCE OR FAMILY VIOLENCE HAPPENING TO SOMEONE YOU KNOW?	147

List of Tables

Table 1: Survey respondents (by sex)	93
Table 2: Survey respondents (by age).....	93
Table 3: Survey respondents (persons with disabilities)	93
Table 4: Survey respondents (rural vs urban).....	93
Table 5: Survey respondents (by district)	93
Table 6: Survey respondents (migration status, i.e. country of birth).....	94
Table 7: Survey respondents (ethnicity)	94
Table 8: Do you consider the following acts to be family violence? (By sex)	95
Table 9: Do you consider the following acts to be family violence? (Rural vs urban)	95
Table 10: Do you consider the following acts to be family violence? (By age).....	95
Table 11: Do you consider the following acts to be family violence? (Persons with disabilities)	95
Table 12: Do you consider the following acts to be family violence? (Ethnicity)	96
Table 13: Do you consider the following acts to be family violence? (By district)	96
Table 14: Do you consider the following acts to be family violence? (Migration status, i.e. country of birth)	97
Table 15: What are some types of violence against women and girls? (By sex)	98
Table 16: What are some types of violence against women and girls? (Rural vs urban)	98
Table 17: What are some types of violence against women and girls? (By age).....	98
Table 18: What are some types of violence against women and girls? (Persons with disabilities)	99
Table 19: What are some types of violence against women and girls? (Ethnicity)	99
Table 20: What are some types of violence against women and girls? (By District).....	100
Table 21: What are some types of violence against women and girls? (Migration status, i.e. country of birth)	100
Table 22: What are some types of violence against men and boys? (By sex)	101
Table 23: What are some types of violence against men and boys? (Rural vs urban)	101
Table 24: What are some types of violence against men and boys? (By age).....	102
Table 25: What are some types of violence against men and boys? (Persons with disabilities)	102
Table 26: What are some types of violence against men and boys? (Ethnicity)	103
Table 27: What are some types of violence against men and boys? (By district)	103
Table 28: What are some types of violence against men and boys? (Migration status, i.e. country of birth).....	104

Table 29: Have you ever heard of any of the following support services available to survivors of violence and their families in your community? (By sex).....	105
Table 30: Aware of at least one form of support services available to survivors of violence and their families in your community i.e. A-H in Table 29 (By sex).....	105
Table 31: Have you ever heard of any of the following support services available to survivors of violence and their families in your community? (Ethnicity).....	106
Table 32: Have you ever heard of any of the following support services available to survivors of violence and their families in your community? (Rural vs urban).....	107
Table 33: Have you ever heard of any of the following support services available to survivors of violence and their families in your community? (By Age).....	107
Table 34: Have you ever heard of any of the following support services available to survivors of violence and their families in your community? (Persons with disabilities, women only)	108
Table 35: Aware of at least one form of support services available to survivors of violence and their families in your community, i.e. A-H in Table 34, (Persons with disabilities, women only) ...	108
Table 36: How did you hear about the support services? (All respondents).....	109
Table 37: Do you think survivors of violence in your community know where to go for help? (By sex)	110
Table 38: Do you think survivors of violence in your community know where to go for help? (By district, women only)	110
Table 39: Do you think survivors of violence in your community know where to go for help? (Rural vs urban, women only)	110
Table 40: Do you think survivors of violence in your community know where to go for help? (Persons with disabilities, women only).....	110
Table 41: A man is justified in beating his partner if she... (All respondents)	111
Table 42: A man is justified in beating his partner if she... (By sex, agree only).....	111
Table 43: A man is justified in beating his partner if she... (By age, agree only)	112
Table 44: A man is justified in beating his partner if she... (Persons with disabilities, agree only)	112
Table 45: A man is justified in beating his partner if she... (Rural vs urban, agree only).....	112
Table 46: A man is justified in beating his partner if she... (Ethnicity, agree only).....	113
Table 47: A man is justified in beating his partner if she... (Migration status, i.e. country of birth).....	114
Table 48: A man is justified in beating his partner if she... (By district).....	114
Table 49: Agree or disagree with the following statements on violence (All respondents, male, and female).....	115
Table 50: Agree or disagree with the following statements on violence (Rural vs urban).....	116
Table 51: Agree or disagree with the following statements on violence (By age)	117
Table 52: Agree or disagree with the following statements on violence (Persons with disabilities)	118
Table 53: Agree with the following statements on violence (By district, agree only)	118
Table 54: Whose right is sex in a relationship? (By sex)	119
Table 55: Whose right is sex in a relationship? (Rural vs urban)	119
Table 56: Whose right is sex in a relationship? (By age).....	119
Table 57: Whose right is sex in a relationship? (Persons with disabilities)	119
Table 58: Whose right is sex in a relationship? (By ethnicity)	120

Table 59: Whose right is sex in a relationship? (By district)	120
Table 60: Whose right is sex in a relationship? (Migration status, i.e. country of birth)	120
Table 61: Who has the authority and makes decision in a household or relationship? (By sex)	121
Table 62: Who has the authority and makes decision in a household or relationship? (Rural vs urban)	121
Table 63: Who has the authority and makes decision in a household or relationship? (By age).....	121
Table 64: Who has the authority and makes decision in a household or relationship? (Persons with disabilities)	122
Table 65: Who has the authority and makes decision in a household or relationship? (Ethnicity)	122
Table 66: Who has the authority and makes decision in a household or relationship? (By district)	122
Table 68: Is it the right of a parent to punish or discipline a child? (All respondents, male, female)	123
Table 69: Is it the right of a parent to punish or discipline a child? (Urban vs rural)	124
Table 70: Is it the right of a parent to punish or discipline a child? (By age).....	125
Table 71: If you needed to report a situation of violence against yourself or someone you know, who would you feel most confident in reporting the incident to? (All respondents, male, female)	126
Table 72: If you needed to report a situation of violence against yourself or someone you know, who would you feel most confident in reporting the incident to? (Rural vs urban).....	126
Table 73: If you needed to report a situation of violence against yourself or someone you know, who would you feel most confident in reporting the incident to? (By age)	127
Table 74: If you needed to report a situation of violence against yourself or someone you know, who would you feel most confident in reporting the incident to? (Persons with disabilities)....	127
Table 75: If you needed to report a situation of violence against yourself or someone you know, who would you feel most confident in reporting the incident to? (Ethnicity).....	128
Table 76: If you needed to report a situation of violence against yourself or someone you know, who would you feel most confident in reporting the incident to? (By district).....	128
Table 77: If you needed to report a situation of violence against yourself or someone you know, who would you feel most confident in reporting the incident to? (Migration status, i.e. country of birth)	129
Table 78: If you needed to access services as a result of gender-based violence, where would you be most comfortable accessing these services? (All respondents).....	130
Table 79: If you needed to access services as a result of gender-based violence, where would you be most comfortable accessing these services? (Rural vs urban).....	130
Table 80: If you needed to access services as a result of gender-based violence, where would you be most comfortable accessing these services? (Persons with disabilities)	131
Table 81: If you needed to access services as a result of gender-based violence, where would you be most comfortable accessing these services? (By district).....	131
Table 82: Are you aware of any activities in your community that address gender equality/the rights of women and girls especially regarding sexuality and reproductive health over the past 12 months? (By sex).....	132
Table 83: List the activities that you were aware of that relate to sexual and reproductive health during the past 12 months.....	133
Table 84: Have you participated in any community activities regarding gender equality/the rights of women and girls especially regarding sexuality and reproduction in the past 12 months? (By sex).....	134

Table 85: Individuals who have participated in any community activities regarding gender equality/the rights of women and girls especially regarding sexuality and reproduction in the past 12 months (By age, n=9)	134
Table 86: Individuals who have participated in any community activities regarding gender equality/the rights of women and girls especially regarding sexuality and reproduction in the past 12 months (Rural vs urban, n=9).....	134
Table 87: Individuals who have participated in any community activities regarding gender equality/the rights of women and girls especially regarding sexuality and reproduction in the past 12 months (By district, n=9).....	134
Table 88: List of activities that respondents report participating in during the last 12 months	135
Table 89: How often have you participated in any community activities regarding gender equality/the rights of women and girls especially regarding sexuality and reproduction in the past 12 months? (By sex).....	136
Table 90: Are you aware of any activities in your community that address gender equality/the rights of women and girls especially regarding addressing violence in relationships between men and women/girls in the past 12 months? (By sex)	137
Table 91: List of activities that respondents report awareness of during the last 12 months.....	137
Table 92: Have you participated in any of the activities in your community addressing violence in relationships between men and women/girls in the past 12 months? (By sex)	138
Table 93: Individuals who have participated in any of the activities in your community addressing violence in relationships between men and women/girls in the past 12 months (By age, n=17)	138
Table 94: Individuals who have participated in any of the activities in your community addressing violence in relationships between men and women/girls in the past 12 months? (Rural vs urban, n=17)	138
Table 95: Individuals who have participated in any of the activities in your community addressing violence in relationships between men and women/girls in the past 12 months? (By district, n=17)	138
Table 96: List of activities that respondents report participating in during the last 12 months	139
Table 97: How often did you attend any community activities regarding addressing violence in relationships between men and women/girls in the past 12 months? (By sex).....	139
Table 98: Of all the activities you were aware of, how many of the planned activities did you attend?	140
Table 99: Did you attend any of these activities with your partner or on your own?.....	140
Table 100: Why did you not attend any of the activities in your community addressing violence in relationships between men and women/girls in the past 12 months?	141
Table 101: Respondents who have heard or seen anything that stereotypes women or girls or creates or reinforces harmful social beliefs or practices for women and girls in the past 12 months (by sex).....	142
Table 102: Respondents who have heard or seen anything that stereotypes women or girls or creates or reinforces harmful social beliefs or practices for women and girls in the past 12 months (rural vs urban).....	142
Table 103: Respondents who have heard or seen anything that stereotypes women or girls or creates or reinforces harmful social beliefs or practices for women and girls in the past 12 months (by age)	142

Table 104: Respondents who have heard or seen anything that stereotypes women or girls or creates or reinforces harmful social beliefs or practices for women and girls in the past 12 months (persons with disabilities)	142
Table 105: Respondents who have heard or seen anything that stereotypes women or girls or creates or reinforces harmful social beliefs or practices for women and girls in the past 12 months (by ethnicity)	142
Table 106: Respondents who have heard or seen anything that stereotypes women or girls or creates or reinforces harmful social beliefs or practices for women and girls in the past 12 months (by district)	143
Table 107: Respondents who have heard or seen anything that stereotypes women or girls or creates or reinforces harmful social beliefs or practices for women and girls in the past 12 months (by migration status, i.e., country of birth).....	143
Table 108: How or where respondents heard or saw anything related to stereotyping (by sex)	144
Table 109: How or where respondents heard or saw anything related to stereotyping (rural vs urban)	144
Table 110: How or where respondents heard or saw anything related to stereotyping (by age)	144
Table 111: How or where respondents heard or saw anything related to stereotyping (persons with disabilities)	145
Table 112: How or where respondents heard or saw anything related to stereotyping (by ethnicity)	145
Table 113: How or where respondents heard or saw anything related to stereotyping (by district)	146
Table 114: How or where respondents heard or saw anything related to stereotyping (by migration status i.e., country of birth).....	146
Table 115: What do you do if you witness, hear about, or learn of domestic violence or family violence happening to someone you know? (All respondents)	147
Table 116: What do you do if you witness, hear about, or learn of domestic violence or family violence happening to someone you know? (Rural vs urban)	147
Table 117: What do you do if you witness, hear about, or learn of domestic violence or family violence happening to someone you know? (Disability status).....	148
Table 118: What do you do if you witness, hear about, or learn of domestic violence or family violence happening to someone you know? (By district)	148

General Demographics of Survey Respondents

Table 1: Survey respondents (by sex)

Male (n=536)	Female (n=718)
42.7%	57.3%

Table 2: Survey respondents (by age)

<20 (n=118)	20-24 (n=215)	25+ (n=921)
9.4%	17.1%	73.4%

Table 3: Survey respondents (persons with disabilities)

Persons with disabilities (n=190)
15.2%

Table 4: Survey respondents (rural vs urban)

Urban (n=906)	Rural (n=348)
72.2%	27.8%

Table 5: Survey respondents (by district)

Corozal (n=291)	Orange Walk (n=262)	Belize (n=143)	Cayo (n=263)	Stann Creek (n=145)	Toledo (n=150)
23.2%	20.9%	11.4%	21.0%	11.6%	12.0%

Table 6: Survey respondents (migration status, i.e. country of birth)

Belize (n=1074)	Mexico (n=10)	Guatemala (n=84)	Honduras (n=32)	El Salvador (n=36)	USA (n=6)	DK/NS (n=0)	Other (n=12)
85.6%	0.8%	6.7%	2.6%	2.9%	0.5%	0.0%	1.0%

Table 7: Survey respondents (ethnicity)

Mestizo/Hispanic (n=701)	Creole (n=207)	Maya (n=167)	Garifuna (n=58)	E. Indian (n=27)	Caucasian (n=4)	Asian (n=1)	Others (n=4)	Mixed (n=78)	DK/NS (n=7)
55.90%	16.50%	13.30%	4.60%	2.20%	0.30%	0.10%	0.30%	6.20%	0.60%

K1. Do you consider the following acts to be family violence?

Table 8: Do you consider the following acts to be family violence? (By sex)

	Men (n=533)	Women (n=716)	All (n=1249)	Men (n=533)	Women (n=716)	All (n=1249)
Violence against a female partner in a household	456	605	1061	85.6%	84.5%	84.9%
Violence against children in a household	462	601	1063	86.7%	83.9%	85.1%
Incest and rape of adolescent girls in a household	470	619	1089	88.2%	86.5%	87.2%
Femicide	450	587	1037	84.4%	82.0%	83.0%
Sexual violence against female partner in a household	457	606	1063	85.7%	84.6%	85.1%

Table 9: Do you consider the following acts to be family violence? (Rural vs urban)

	Urban (n=906)	Rural (n=348)	Urban (n=906)	Rural (n=348)
Violence against a female partner in a household	771	290	85.1%	83.3%
Violence against children in a household	775	288	85.5%	82.8%
Incest and rape of adolescent girls in a household	795	294	87.7%	84.5%
Femicide	754	283	83.2%	81.3%
Sexual violence against female partner in a household	773	290	85.3%	83.3%

Table 10: Do you consider the following acts to be family violence? (By age)

	<20 (n=118)	20-24 (n=215)	25+ (n=921)	<20 (n=118)	20-24 (n=215)	25+ (n=921)
Violence against a female partner in a household	100	181	780	84.7%	84.2%	84.7%
Violence against children in a household	102	186	775	86.4%	86.5%	84.1%
Incest and rape of adolescent girls in a household	100	185	804	84.7%	86.0%	87.3%
Femicide	94	179	764	79.7%	83.3%	83.0%
Sexual violence against female partner in a household	98	183	782	83.1%	85.1%	84.9%

Table 11: Do you consider the following acts to be family violence? (Persons with disabilities)

	Disability (n=190)	Disability (n=190)
Violence against a female partner in a household	151	79.5%
Violence against children in a household	154	81.1%
Incest and rape of adolescent girls in a household	160	84.2%
Femicide	154	81.1%
Sexual violence against female partner in a household	155	81.6%

Table 12: Do you consider the following acts to be family violence? (Ethnicity)

	Mestizo/Hispanic (n=701)	Creole (n=207)	Maya (n=167)	Garifuna (n=58)	E.Indian (n=27)	Others (n=4)	Mixed (n=78)	Caucasian (n=4)	Asian (n=1)	DK/NS (n=7)
Violence against a female partner in a household	605	182	125	47	20	2	69	4	1	6
Violence against children in a household	609	180	116	51	24	4	68	4	1	6
Incest and rape of adolescent girls in a household	622	183	126	48	25	4	70	4	1	6
Femicide	606	174	107	45	23	3	67	4	1	7
Sexual violence against female partner in a household	604	182	116	50	26	3	71	4	1	6
	Mestizo/Hispanic (n=701)	Creole (n=207)	Maya (n=167)	Garifuna (n=58)	E.Indian (n=27)	Others (n=4)	Mixed (n=78)	Caucasian (n=4)	Asian (n=1)	DK/NS (n=7)
Violence against a female partner in a household	86.3%	87.9%	74.9%	81.0%	74.1%	50.0%	88.5%	100.0%	100.0%	85.7%
Violence against children in a household	86.9%	87.0%	69.5%	87.9%	88.9%	100.0%	87.2%	100.0%	100.0%	85.7%
Incest and rape of adolescent girls in a household	88.7%	88.4%	75.4%	82.8%	92.6%	100.0%	89.7%	100.0%	100.0%	85.7%
Femicide	86.4%	84.1%	64.1%	77.6%	85.2%	75.0%	85.9%	100.0%	100.0%	100.0%
Sexual violence against female partner in a household	86.2%	87.9%	69.5%	86.2%	96.3%	75.0%	91.0%	100.0%	100.0%	85.7%

Table 13: Do you consider the following acts to be family violence? (By district)

	Corozal (n=291)	Orange Walk (n=262)	Belize (n=143)	Cayo (n=263)	Stann Creek (n=145)	Toledo (n=150)	Corozal (n=291)	Orange Walk (n=262)	Belize (n=143)	Cayo (n=263)	Stann Creek (n=145)	Toledo (n=150)
Violence against a female partner in a household	278	240	125	191	119	108	95.5%	91.6%	87.4%	72.6%	82.1%	72.0%
Violence against children in a household	283	240	126	184	122	108	97.3%	91.6%	88.1%	70.0%	84.1%	72.0%
Incest and rape of adolescent girls in a household	286	244	129	188	126	116	98.3%	93.1%	90.2%	71.5%	86.9%	77.3%
Femicide	279	237	122	185	118	96	95.9%	90.5%	85.3%	70.3%	81.4%	64.0%
Sexual violence against female partner in a household	284	232	125	189	126	107	97.6%	88.5%	87.4%	71.9%	86.9%	71.3%

Table 14: Do you consider the following acts to be family violence? (Migration status, i.e. country of birth)

	Belize (n=1074)	Mexico (n=10)	Guatemala (n=84)	Honduras (n=32)	El Salvador (n=36)	USA (n=6)	Other (n=12)	Belize (n=1074)	Mexico (n=10)	Guatemala (n=84)	Honduras (n=32)	El Salvador (n=36)	USA (n=6)	Other (n=12)
Violence against a female partner in a household	910	9	69	27	30	6	10	84.7%	90.0%	82.1%	84.4%	83.3%	100.0%	83.3%
Violence against children in a household	913	9	66	27	31	6	11	85.0%	90.0%	78.6%	84.4%	86.1%	100.0%	91.7%
Incest and rape of adolescent girls in a household	934	9	70	28	32	5	11	87.0%	90.0%	83.3%	87.5%	88.9%	83.3%	91.7%
Femicide	887	9	66	29	30	6	10	82.6%	90.0%	78.6%	90.6%	83.3%	100.0%	83.3%
Sexual violence against female partner in a household	914	9	66	28	30	6	10	85.1%	90.0%	78.6%	87.5%	83.3%	100.0%	83.3%

K2. What are some types of violence against women and girls?

Table 15: What are some types of violence against women and girls? (By sex)

	Men (n=533)	Women (n=716)	All (n=1254)	Men (n=533)	Women (n=716)	All (n=1254)
Physical abuse	416	580	996	77.6%	80.8%	79.4%
Sexual abuse	239	367	606	44.6%	51.1%	48.3%
Emotional abuse	111	191	302	20.7%	26.6%	24.1%
Verbal abuse	223	287	510	41.6%	40.0%	40.7%
Deprivation of liberty	46	79	125	8.6%	11.0%	10.0%
Other	79	94	173	14.7%	13.1%	13.8%

Table 16: What are some types of violence against women and girls? (Rural vs urban)

	Urban (n=906)	Rural (n=348)	Urban (n=906)	Rural (n=348)
Physical abuse	716	280	79.0%	80.5%
Sexual abuse	453	153	50.0%	44.0%
Emotional abuse	224	78	24.7%	22.4%
Verbal abuse	365	145	40.3%	41.7%
Deprivation of liberty	90	35	9.9%	10.1%
Other	140	33	15.5%	9.5%

Table 17: What are some types of violence against women and girls? (By age)

	<20 (n=118)	20-24 (n=215)	25+ (n=921)	<20 (n=118)	20-24 (n=215)	25+ (n=921)
Physical abuse	86	205	705	72.9%	95.3%	76.5%
Sexual abuse	61	109	436	51.7%	50.7%	47.3%
Emotional abuse	21	53	228	17.8%	24.7%	24.8%
Verbal abuse	36	79	395	30.5%	36.7%	42.9%
Deprivation of liberty	11	19	95	9.3%	8.8%	10.3%
Other	17	29	127	14.4%	13.5%	13.8%

Table 18: What are some types of violence against women and girls? (Persons with disabilities)

	Disability (n=190)	Disability (n=190)
Physical abuse	146	76.8%
Sexual abuse	80	42.1%
Emotional abuse	49	25.8%
Verbal abuse	82	43.2%
Deprivation of liberty	28	14.7%
Other	27	14.2%

Table 19: What are some types of violence against women and girls? (Ethnicity)

	Mestizo/Hispanic (n=701)	Creole (n=207)	Maya (n=167)	Garifuna (n=58)	E.Indian (n=27)	Caucasian (n=4)	Asian (n=1)	Others (n=4)	Mixed (n=78)
Physical abuse	556	163	137	47	24	4	1	1	59
Sexual abuse	332	110	71	20	13	3	1	3	47
Emotional abuse	159	63	31	16	6	1	0	1	25
Verbal abuse	307	91	38	26	13	3	0	2	29
Deprivation of liberty	65	24	21	2	3	2	0	1	7
Other	81	35	15	19	2		1	1	15
	Mestizo/Hispanic (n=701)	Creole (n=207)	Maya (n=167)	Garifuna (n=58)	E.Indian (n=27)	Caucasian (n=4)	Asian (n=1)	Others (n=4)	Mixed (n=78)
Physical abuse	79.3%	78.7%	82.0%	81.0%	88.9%	100.0%	100.0%	25.0%	75.6%
Sexual abuse	47.4%	53.1%	42.5%	34.5%	48.1%	75.0%	100.0%	75.0%	60.3%
Emotional abuse	22.7%	30.4%	18.6%	27.6%	22.2%	25.0%	0.0%	25.0%	32.1%
Verbal abuse	43.8%	44.0%	22.8%	44.8%	48.1%	75.0%	0.0%	50.0%	37.2%
Deprivation of liberty	9.3%	11.6%	12.6%	3.4%	11.1%	50.0%	0.0%	25.0%	9.0%
Other	11.6%	16.9%	9.0%	32.8%	7.4%	0.0%	100.0%	25.0%	19.2%

Table 20: What are some types of violence against women and girls? (By District)

	Corozal (n=291)	Orange Walk (n=262)	Belize (N=143)	Cayo (n=263)	Stann Creek (n=145)	Toledo (n=150)	Corozal (n=291)	Orange Walk (n=262)	Belize (N=143)	Cayo (n=263)	Stann Creek (n=145)	Toledo (n=150)
Physical abuse	227	228	116	192	100	133	78.0%	87.0%	81.1%	73.0%	69.0%	88.7%
Sexual abuse	129	132	79	130	64	72	44.3%	50.4%	55.2%	49.4%	44.1%	48.0%
Emotional abuse	68	68	45	50	35	36	23.4%	26.0%	31.5%	19.0%	24.1%	24.0%
Verbal abuse	99	145	62	118	43	43	34.0%	55.3%	43.4%	44.9%	29.7%	28.7%
Deprivation of liberty	34	25	10	28	6	22	11.7%	9.5%	7.0%	10.6%	4.1%	14.7%
Other	25	39	33	41	30	5	8.6%	14.9%	23.1%	15.6%	20.7%	3.3%

Table 21: What are some types of violence against women and girls? (Migration status, i.e. country of birth)

	Belize (n=1074)	Mexico (n=10)	Guatemala (n=84)	Honduras (n=32)	El Salvador (n=36)	USA (n=6)	Other (n=12)	Belize (n=1074)	Mexico (n=10)	Guatemala (n=84)	Honduras (n=32)	El Salvador (n=36)	USA (n=6)	Other (n=12)
Physical abuse	854	7	69	24	27	6	9	79.5%	70.0%	82.1%	75.0%	75.0%	100.0%	75.0%
Sexual abuse	522	5	36	17	14	3	9	48.6%	50.0%	42.9%	53.1%	38.9%	50.0%	75.0%
Emotional abuse	264	2	17	5	9	2	3	24.6%	20.0%	20.2%	15.6%	25.0%	33.3%	25.0%
Verbal abuse	428	4	37	16	17	4	4	39.9%	40.0%	44.0%	50.0%	47.2%	66.7%	33.3%
Deprivation of liberty	108	2	9	2	2	2	0	10.1%	20.0%	10.7%	6.3%	5.6%	33.3%	0.0%
Other	151	5	7	3	5	0	2	14.1%	50.0%	8.3%	9.4%	13.9%	0.0%	16.7%

K3. What are some types of violence against men and boys?

Table 22: What are some types of violence against men and boys? (By sex)

	Men (n=536)	Women (n=718)	All (n=1254)	Men (n=536)	Women (n=718)	All (n=1254)
Physical abuse	387	521	908	72.2%	72.6%	72.4%
Sexual abuse	170	299	469	31.7%	41.6%	37.4%
Emotional abuse	117	155	272	21.8%	21.6%	21.7%
Verbal abuse	181	240	421	33.8%	33.4%	33.6%
Deprivation of liberty	42	45	87	7.8%	6.3%	6.9%
Other	84	114	198	15.7%	15.9%	15.8%

Table 23: What are some types of violence against men and boys? (Rural vs urban)

	Urban (n=906)	Rural (n=348)	Urban (n=906)	Rural (n=348)
Physical abuse	662	246	73.1%	70.7%
Sexual abuse	357	112	39.4%	32.2%
Emotional abuse	195	77	21.5%	22.1%
Verbal abuse	299	122	33.0%	35.1%
Deprivation of liberty	56	31	6.2%	8.9%
Other	146	52	16.1%	14.9%

Table 24: What are some types of violence against men and boys? (By age)

	<20 (n=118)	20-24 (n=215)	25+ (n=921)	<20 (n=118)	20-24 (n=215)	25+ (n=921)
Physical abuse	92	44	672	78.0%	20.5%	73.0%
Sexual abuse	38	84	347	32.2%	39.1%	37.7%
Emotional abuse	17	51	204	14.4%	23.7%	22.1%
Verbal abuse	30	68	323	25.4%	31.6%	35.1%
Deprivation of liberty	4	15	68	3.4%	7.0%	7.4%
Other	16	37	145	13.6%	17.2%	15.7%

Table 25: What are some types of violence against men and boys? (Persons with disabilities)

	Disability (n=190)	Disability (n=190)
Physical abuse	131	68.9%
Sexual abuse	61	32.1%
Emotional abuse	48	25.3%
Verbal abuse	64	33.7%
Deprivation of liberty	12	6.3%
Other	29	15.3%

Table 26: What are some types of violence against men and boys? (Ethnicity)

	Mestizo/ Hispanic (n=701)	Creole (n=207)	Maya (n=167)	Garifuna (n=58)	E.Indian (n=27)	Caucasian (n=4)	Asian (n=1)	Others (n=4)	Mixed (n=78)
Physical abuse	510	143	133	40	20	4	1	2	54
Sexual abuse	247	107	38	25	6	3	1		36
Emotional abuse	152	53	25	11	8	1			22
Verbal abuse	242	68	51	24	8	3		3	22
Deprivation of liberty	55	12	12	1	1	1		1	4
Other	107	46	16	8	3			1	16
	Mestizo/ Hispanic (n=701)	Creole (n=207)	Maya (n=167)	Garifuna (n=58)	E.Indian (n=27)	Caucasian (n=4)	Asian (n=1)	Others (n=4)	Mixed (n=78)
Physical abuse	72.8%	69.1%	79.6%	69.0%	74.1%	100.0%	100.0%	50.0%	69.2%
Sexual abuse	35.2%	51.7%	22.8%	43.1%	22.2%	75.0%	100.0%	0.0%	46.2%
Emotional abuse	21.7%	25.6%	15.0%	19.0%	29.6%	25.0%	0.0%	0.0%	28.2%
Verbal abuse	34.5%	32.9%	30.5%	41.4%	29.6%	75.0%	0.0%	75.0%	28.2%
Deprivation of liberty	7.8%	5.8%	7.2%	1.7%	3.7%	25.0%	0.0%	25.0%	5.1%
Other	15.3%	22.2%	9.6%	13.8%	11.1%	0.0%	0.0%	25.0%	20.5%

Table 27: What are some types of violence against men and boys? (By district)

	Corozal (n=291)	Orange Walk (n=262)	Belize (n=143)	Cayo (n=263)	Stann Creek (n=145)	Toledo (n=150)	Corozal (n=291)	Orange Walk (n=262)	Belize (n=143)	Cayo (n=263)	Stann Creek (n=145)	Toledo (n=150)
Physical abuse	196	213	100	177	92	130	67.4%	81.3%	69.9%	67.3%	63.4%	86.7%
Sexual abuse	103	90	80	100	57	39	35.4%	34.4%	55.9%	38.0%	39.3%	26.0%
Emotional abuse	63	70	37	47	26	29	21.6%	26.7%	25.9%	17.9%	17.9%	19.3%
Verbal abuse	70	120	42	99	31	59	24.1%	45.8%	29.4%	37.6%	21.4%	39.3%
Deprivation of liberty	16	27	7	17	6	14	5.5%	10.3%	4.9%	6.5%	4.1%	9.3%
Other	37	37	35	58	30	1	12.7%	14.1%	24.5%	22.1%	20.7%	0.7%

Table 28: What are some types of violence against men and boys? (Migration status, i.e. country of birth)

	Belize (n=1074)	Mexico (n=10)	Guatemala (n=84)	Honduras (n=32)	El Salvador (n=36)	USA (n=6)	Other (n=12)	Belize (n=1074)	Mexico (n=10)	Guatemala (n=84)	Honduras (n=32)	El Salvador (n=36)	USA (n=6)	Other (n=12)
Physical abuse	784	7	56	21	26	6	8	73.0%	70.0%	66.7%	65.6%	72.2%	100.0%	66.7%
Sexual abuse	400	5	24	15	15	4	6	37.2%	50.0%	28.6%	46.9%	41.7%	66.7%	50.0%
Emotional abuse	242	1	16	4	5	2	2	22.5%	10.0%	19.0%	12.5%	13.9%	33.3%	16.7%
Verbal abuse	356	3	30	12	13	4	3	33.1%	30.0%	35.7%	37.5%	36.1%	66.7%	25.0%
Deprivation of liberty	68	1	10	3	3	1	1	6.3%	10.0%	11.9%	9.4%	8.3%	16.7%	8.3%
Other	170	3	12	5	6		2	15.8%	30.0%	14.3%	15.6%	16.7%	0.0%	16.7%

K4. Have you ever heard of any of the following support services available to survivors of violence and their families in your community?

Table 29: Have you ever heard of any of the following support services available to survivors of violence and their families in your community? (By sex)

	Male (n=542)	Female (n=718)	Male (n=542)	Female (n=718)
A. Shelter for girls and women survivors of violence	66	110	12.3%	15.3%
B. Free legal assistance	74	111	13.8%	15.5%
C. Protection or Restraining Orders	300	433	56.0%	60.3%
D. Emergency assistance through community health workers	186	257	34.7%	35.8%
E. Survivor support programmes	89	136	16.6%	18.9%
F. Counselling or Psychosocial support	172	241	32.1%	33.6%
G. Social workers	281	414	52.4%	57.7%
H. Dignity Kits	46	44	8.6%	6.1%

Table 30: Aware of at least one form of support services available to survivors of violence and their families in your community i.e. A-H in Table 29 (By sex)

	Male (n=542)	Female (n=718)
Aware of at least one form of support services available to survivors of violence and their families in your community i.e. A-H in Table 29	412	571
Aware of at least one form of support services available to survivors of violence and their families in your community i.e. A-H in Table 29	76.0%	79.5%

Table 32: Have you ever heard of any of the following support services available to survivors of violence and their families in your community? (Rural vs urban)

	Urban (n=525)	Rural (n=193)	Urban (n=525)	Rural (n=193)
A. Shelter for girls and women survivors of violence	85	25	16.2%	13.0%
B. Free legal assistance	86	25	16.4%	13.0%
C. Protection or Restraining Orders	328	105	62.5%	54.4%
D. Emergency assistance through community health workers	183	74	34.9%	38.3%
E. Survivor support programmes	106	30	20.2%	15.5%
F. Counselling or Psychosocial support	183	58	34.9%	30.1%
G. Social workers	323	91	61.5%	47.2%
H. Dignity Kits	36	8	6.9%	4.1%

Table 33: Have you ever heard of any of the following support services available to survivors of violence and their families in your community? (By Age)

	<20 (n=62)	20-24 (n=127)	25+ (n=529)	<20 (n=62)	20-24 (n=127)	25+ (n=529)
A. Shelter for girls and women survivors of violence	7	15	88	11.3%	11.8%	16.6%
B. Free legal assistance	7	14	90	11.3%	11.0%	17.0%
C. Protection or Restraining Orders	31	77	325	50.0%	60.6%	61.4%
D. Emergency assistance through community health workers	18	46	193	29.0%	36.2%	36.5%
E. Survivor support programmes	12	21	103	19.4%	16.5%	19.5%
F. Counselling or Psychosocial support	23	43	175	37.1%	33.9%	33.1%
G. Social workers	37	75	302	59.7%	59.1%	57.1%
H. Dignity Kits	6	8	30	9.7%	6.3%	5.7%

Table 34: Have you ever heard of any of the following support services available to survivors of violence and their families in your community? (Persons with disabilities, women only)

	Women with disabilities (n=124)	Women with disabilities (n=124)
A. Shelter for girls and women survivors of violence	22	17.7%
B. Free legal assistance	23	18.5%
C. Protection or Restraining Orders	80	64.5%
D. Emergency assistance through community health workers	38	30.6%
E. Survivor support programmes	30	24.2%
F. Counselling or Psychosocial support	45	36.3%
G. Social workers	77	62.1%
H. Dignity Kits	13	10.5%

Table 35: Aware of at least one form of support services available to survivors of violence and their families in your community, i.e. A-H in Table 34, (Persons with disabilities, women only)

	Women with disabilities (n=124)	Women with disabilities (n=124)
Aware of at least one form of support services available to survivors of violence and their families in your community i.e. A-H in Table 34	106	85.5%

K5. How did you hear about the support services?

Table 36: How did you hear about the support services? (All respondents)

	A. Shelter for girls and women survivors of violence	B. Free legal assistance	C. Protection or Restraining Orders	D. Emergency assistance through community health workers	E. Survivor support programmes	F. Counselling or Psychosocial support	G. Social workers	H. Dignity Kits
Through a friend or family member	81	73	459	199	86	176	380	38
Local meetings or events	11	23	59	54	18	54	67	9
Radio	28	26	55	48	29	32	57	11
Newspapers	3	4	13	9	6	7	9	2
Television	37	29	77	51	39	43	55	10
Through a local organization (women's, faith-based, etc)	33	31	119	94	42	108	146	27
Internet/social media	26	36	71	53	38	59	73	11
No reply	1	5	4	4	5	4	13	0
Other	8	6	36	26	5	28	44	3
	A. Shelter for girls and women survivors of violence	B. Free legal assistance	C. Protection or Restraining Orders	D. Emergency assistance through community health workers	E. Survivor support programmes	F. Counselling or Psychosocial support	G. Social workers	H. Dignity Kits
Through a friend or family member	35.5%	31.3%	51.4%	37.0%	32.1%	34.4%	45.0%	34.2%
Local meetings or events	4.8%	9.9%	6.6%	10.0%	6.7%	10.6%	7.9%	8.1%
Radio	12.3%	11.2%	6.2%	8.9%	10.8%	6.3%	6.8%	9.9%
Newspapers	1.3%	1.7%	1.5%	1.7%	2.2%	1.4%	1.1%	1.8%
Television	16.2%	12.4%	8.6%	9.5%	14.6%	8.4%	6.5%	9.0%
Through a local organization (women's, faith-based, etc)	14.5%	13.3%	13.3%	17.5%	15.7%	21.1%	17.3%	24.3%
Internet/social media	11.4%	15.5%	8.0%	9.9%	14.2%	11.5%	8.6%	9.9%
No reply	0.4%	2.1%	0.4%	0.7%	1.9%	0.8%	1.5%	0.0%
Other	3.5%	2.6%	4.0%	4.8%	1.9%	5.5%	5.2%	2.7%

K6. Do you think survivors of violence in your community know where to go for help?

Table 37: Do you think survivors of violence in your community know where to go for help? (By sex)

	Male (n=536)	Female (n=718)	Male (n=536)	Female (n=718)
Yes	225	297	42.0%	41.4%
No	237	304	44.2%	42.3%
Not sure	74	117	13.8%	16.3%

Table 38: Do you think survivors of violence in your community know where to go for help? (By district, women only)

	Corozal, (women, n=166)	Orange Walk (women, n=143)	Belize (women, n=87)	Cayo (women, n=154)	Stann Creek (women, n=82)	Toledo (women, n=86)	Corozal, (women, n=166)	Orange Walk (women, n=143)	Belize (women, n=87)	Cayo (women, n=154)	Stann Creek (women, n=82)	Toledo (women, n=86)
Yes	81	53	24	70	35	34	48.8%	37.1%	27.6%	45.5%	42.7%	39.5%
No	67	67	43	67	28	32	40.4%	46.9%	49.4%	43.5%	34.1%	37.2%
Not sure	8	23	20	17	19	20	10.8%	16.1%	23.0%	11.0%	23.2%	23.3%

Table 39: Do you think survivors of violence in your community know where to go for help? (Rural vs urban, women only)

	Urban (women, n=525)	Rural (women, n=193)	Urban (women, n=525)	Rural (women, n=193)
Yes	218	79	41.5%	40.9%
No	227	77	43.2%	39.9%
Not sure	80	37	15.2%	19.2%

Table 40: Do you think survivors of violence in your community know where to go for help? (Persons with disabilities, women only)

	Women with disabilities (n=124)	
Yes	34.7%	43
No	48.4%	60
Not sure	16.9%	21

A1. A man is justified in beating his wife or partner if she...

Surveyor reads: "When two people marry or live together, they usually share both good and bad moments. I would like to ask you some questions about your thoughts on things that may annoy a husband or partner and the consequences. State whether you agree or disagree with the following statements"

Table 41: A man is justified in beating his partner if she... (All respondents)

	Agree (n=1254)	Disagree (n=1254)	Neither Agree nor Disagree (n=1254)	No response (n=1254)	Agree (n=1254)	Disagree (n=1254)	Neither Agree nor Disagree (n=1254)	No response (n=1254)
a) she burns the food.	18	1223	3	10	1.4%	97.5%	0.2%	0.8%
b) she cheats on him with another man.	95	1108	36	15	7.6%	88.4%	2.9%	1.2%
c) she talks back to him or disrespects him.	21	1211	10	12	1.7%	96.6%	0.8%	1.0%
d) she neglects the children.	57	1168	16	13	4.5%	93.1%	1.3%	1.0%
e) she stays out late.	45	1179	17	13	3.6%	94.0%	1.4%	1.0%

Table 42: A man is justified in beating his partner if she... (By sex, agree only)

	Male	Female	Male	Female
Total Respondents	536	718	42.7%	57.3%
a) she burns the food.	5	13	0.9%	1.8%
b) she cheats on him with another man.	29	66	5.4%	9.2%
c) she talks back to him or disrespects him.	6	15	1.1%	2.1%
d) she neglects the children.	18	39	3.4%	5.4%
e) she stays out late.	11	34	2.1%	4.7%

Table 43: A man is justified in beating his partner if she... (By age, agree only)

	18-24	25-39	40+	18-24	25-39	40+
Total Respondents	333	641	280	26.6%	51.1%	22.3%
a) she burns the food.	4	9	5	1.2%	1.4%	1.8%
b) she cheats on him with another man.	24	49	22	7.2%	7.6%	7.9%
c) she talks back to him or disrespects him.	5	11	5	1.5%	1.7%	1.8%
d) she neglects the children.	15	28	14	4.5%	4.4%	5.0%
e) she stays out late.	14	11	11	4.2%	1.7%	3.9%

Table 44: A man is justified in beating his partner if she... (Persons with disabilities, agree only)

	Persons with disabilities	Persons with disabilities
Total Respondents	190	15.2%
a) she burns the food.	1	0.5%
b) she cheats on him with another man.	18	9.5%
c) she talks back to him or disrespects him.	2	1.1%
d) she neglects the children.	9	4.7%
e) she stays out late.	8	4.2%

Table 45: A man is justified in beating his partner if she... (Rural vs urban, agree only)

	Urban	Rural	Urban	Rural
Total Respondents	906	348	72.2%	27.8%
a) she burns the food.	14	4	1.5%	1.1%
b) she cheats on him with another man.	64	31	7.1%	8.9%
c) she talks back to him or disrespects him.	13	8	1.4%	2.3%
d) she neglects the children.	36	21	4.0%	6.0%
e) she stays out late.	32	13	3.5%	3.7%

Table 46: A man is justified in beating his partner if she... (Ethnicity, agree only)

	Mestizo/Hispanic	Creole	Maya	Garifuna	E.Indian	Mennonite	Caucasian	Asian	Others	Mixed	DK/NS
Totals	701	207	167	58	27	0	4	1	4	78	7
a) she burns the food.	9	5	1	1	0	0	0	0	0	1	0
b) she cheats on him with another man.	45	13	26	3	2	0	0	0	0	6	0
c) she talks back to him or disrespects him.	7	5	6	1	0	0	0	0	0	2	0
d) she neglects the children.	19	5	17	5	1	0	0	0	1	9	0
e) she stays out late.	22	5	12	1	1	0	0	0	0	4	0
	Mestizo/Hispanic (n=701)	Creole (n=207)	Maya (n=167)	Garifuna (n=58)	E.Indian (n=27)	Others (n=4)	Mixed (n=78)	Mennonite (n=0)	Caucasian (n=4)	Asian (n=1)	DK/NS (n=7)
Totals	55.9%	16.5%	13.3%	4.6%	2.2%	0.3%	6.2%	0.0%	0.3%	0.1%	0.6%
a) she burns the food.	1.3%	2.4%	0.6%	1.7%	0.0%	0.0%	1.3%	0.0%	0.0%	0.0%	0.0%
b) she cheats on him with another man.	6.4%	6.3%	15.6%	5.2%	7.4%	0.0%	7.7%	0.0%	0.0%	0.0%	0.0%
c) she talks back to him or disrespects him.	1.0%	2.4%	3.6%	1.7%	0.0%	0.0%	2.6%	0.0%	0.0%	0.0%	0.0%
d) she neglects the children.	2.7%	2.4%	10.2%	8.6%	3.7%	25.0%	11.5%	0.0%	0.0%	0.0%	0.0%
e) she stays out late.	3.1%	2.4%	7.2%	1.7%	3.7%	0.0%	5.1%	0.0%	0.0%	0.0%	0.0%

Table 47: A man is justified in beating his partner if she... (Migration status, i.e. country of birth)

	Belize	Mexico	Guatemala	Honduras	El Salvador	USA	DK/NS	Belize (n=1074)	Mexico (n=10)	Guatemala (n=84)	Honduras (n=32)	El Salvador (n=36)	DK/NS (n=12)	USA (n=6)
Totals	1074	10	84	32	36	6	12	85.6%	0.8%	6.7%	2.6%	2.9%	1.0%	0.5%
a) she burns the food.	15	0	2	1	0	0	0	1.4%	0.0%	2.4%	3.1%	0.0%	0.0%	0.0%
b) she cheats on him with another man.	85	2	6	2	0	0	0	7.9%	20.0%	7.1%	6.3%	0.0%	0.0%	0.0%
c) she talks back to him or disrespects him.	20	0	1	0	0	0	0	1.9%	0.0%	1.2%	0.0%	0.0%	0.0%	0.0%
d) she neglects the children.	50	2	2	1	1	0	1	4.7%	20.0%	2.4%	3.1%	2.8%	8.3%	0.0%
e) she stays out late.	43	0	1	1	0	0	0	4.0%	0.0%	1.2%	3.1%	0.0%	0.0%	0.0%

Table 48: A man is justified in beating his partner if she... (By district)

	Corozal	Orange Walk	Belize	Cayo	Stann Creek	Toledo	Corozal (n=291)	Orange Walk (n=262)	Belize (n=143)	Cayo (n=263)	Stann Creek (n=145)	Toledo (n=150)
Totals	291	262	143	263	145	150	23.2%	20.9%	11.4%	21.0%	11.6%	12.0%
a) she burns the food.	6	2	4	1	4	1	2.1%	0.8%	2.8%	0.4%	2.8%	0.7%
b) she cheats on him with another man.	26	16	8	16	7	22	8.9%	6.1%	5.6%	6.1%	4.8%	14.7%
c) she talks back to him or disrespects him.	2	2	5	4	3	5	0.7%	0.8%	3.5%	1.5%	2.1%	3.3%
d) she neglects the children.	7	3	8	14	8	17	2.4%	1.1%	5.6%	5.3%	5.5%	11.3%
e) she stays out late.	11	6	5	8	4	11	3.8%	2.3%	3.5%	3.0%	2.8%	7.3%

A2. State whether you agree or disagree with the following statements related to violence

Surveyor reads: "Sometimes, we encounter people who have different lifestyles and behaviour. I would like to ask you some questions about your thoughts on persons who may be different."

Table 49: Agree or disagree with the following statements on violence (All respondents, male, and female)

All (n=1233)	Agree	Disagree	Neither Agree nor Disagree	Agree	Disagree	Neither Agree nor Disagree
a) Violence against a man or boy is justified if he dresses like a female.	73	1141	19	5.9%	92.5%	1.5%
b) Violence against a man or boy is justified if he is perceived to be gay.	51	1169	17	4.1%	94.8%	1.4%
c) If a man experiences violence from his partner, he should report it to the relevant authorities	1122	96	17	91.0%	7.8%	1.4%
d) Violence against a woman or girl is justified if she dresses like a male.	50	1173	15	4.1%	95.1%	1.2%
e) Violence against a woman or girl is justified if she is perceived to be a lesbian.	49	1176	10	4.0%	95.4%	0.8%
f) Domestic violence is a private matter and outsiders should not intervene.	384	777	71	31.1%	63.0%	5.8%
Men (n=524)	Agree	Disagree	Neither Agree nor Disagree	Agree	Disagree	Neither Agree nor Disagree
a) Violence against a man or boy is justified if he dresses like a female.	37	477	10	7.1%	91.0%	1.9%
b) Violence against a man or boy is justified if he is perceived to be gay.	21	493	11	4.0%	94.1%	2.1%
c) If a man experiences violence from his partner, he should report it to the relevant authorities	474	84	24	90.5%	16.0%	4.6%
d) Violence against a woman or girl is justified if she dresses like a male.	20	496	8	3.8%	94.7%	1.5%
e) Violence against a woman or girl is justified if she is perceived to be a lesbian.	22	495	7	4.2%	94.5%	1.3%
f) Domestic violence is a private matter and outsiders should not intervene.	187	306	33	35.7%	58.4%	6.3%
Women (n=709)	Agree	Disagree	Neither Agree nor Disagree	Agree	Disagree	Neither Agree nor Disagree
a) Violence against a man or boy is justified if he dresses like a female.	36	664	9	5.1%	93.7%	1.3%
b) Violence against a man or boy is justified if he is perceived to be gay.	30	676	6	4.2%	95.3%	0.8%
c) If a man experiences violence from his partner, he should report it to the relevant authorities	648	108	27	91.4%	15.2%	3.8%
d) Violence against a woman or girl is justified if she dresses like a male.	30	677	7	4.2%	95.5%	1.0%
e) Violence against a woman or girl is justified if she is perceived to be a lesbian.	27	681	3	3.8%	96.1%	0.4%
f) Domestic violence is a private matter and outsiders should not intervene.	197	471	38	27.8%	66.4%	5.4%

Table 50: Agree or disagree with the following statements on violence (Rural vs urban)

Urban (n=890)	Agree	Disagree	Neither Agree nor Disagree	Agree	Disagree	Neither Agree nor Disagree
a) Violence against a man or boy is justified if he dresses like a female.	48	828	14	5.4%	93.0%	1.6%
b) Violence against a man or boy is justified if he is perceived to be gay.	39	841	12	4.4%	94.5%	1.3%
c) If a man experiences violence from his partner, he should report it to the relevant authorities	810	70	12	91.0%	7.9%	1.3%
d) Violence against a woman or girl is justified if she dresses like a male.	37	846	11	4.2%	95.1%	1.2%
e) Violence against a woman or girl is justified if she is perceived to be a lesbian.	36	853	5	4.0%	95.8%	0.6%
f) Domestic violence is a private matter and outsiders should not intervene.	273	572	43	30.7%	64.3%	4.8%
Rural (n=343)	Agree	Disagree	Neither Agree nor Disagree	Agree	Disagree	Neither Agree nor Disagree
a) Violence against a man or boy is justified if he dresses like a female.	25	313	5	7.3%	91.3%	1.5%
b) Violence against a man or boy is justified if he is perceived to be gay.	12	328	5	3.5%	95.6%	1.5%
c) If a man experiences violence from his partner, he should report it to the relevant authorities	312	26	5	91.0%	7.6%	1.5%
d) Violence against a woman or girl is justified if she dresses like a male.	13	327	4	3.8%	95.3%	1.2%
e) Violence against a woman or girl is justified if she is perceived to be a lesbian.	13	323	5	3.8%	94.2%	1.5%
f) Domestic violence is a private matter and outsiders should not intervene.	111	205	28	32.4%	59.8%	8.2%

Table 51: Agree or disagree with the following statements on violence (By age)

Age <20 (n=118)	Agree	Disagree	Neither Agree nor Disagree	Agree	Disagree	Neither Agree nor Disagree
a) Violence against a man or boy is justified if he dresses like a female.	12	104	2	10.2%	88.1%	1.7%
b) Violence against a man or boy is justified if he is perceived to be gay.	8	109	1	6.8%	92.4%	0.8%
c) If a man experiences violence from his partner, he should report it to the relevant authorities	109	9	0	92.4%	7.6%	0.0%
d) Violence against a woman or girl is justified if she dresses like a male.	9	108	1	7.6%	91.5%	0.8%
e) Violence against a woman or girl is justified if she is perceived to be a lesbian.	6	112	0	5.1%	94.9%	0.0%
f) Domestic violence is a private matter and outsiders should not intervene.	37	74	7	31.4%	62.7%	5.9%
Age 20-24 (n=211)	Agree	Disagree	Neither Agree nor Disagree	Agree	Disagree	Neither Agree nor Disagree
a) Violence against a man or boy is justified if he dresses like a female.	18	192	1	8.5%	91.0%	0.5%
b) Violence against a man or boy is justified if he is perceived to be gay.	14	199	1	6.6%	94.3%	0.5%
c) If a man experiences violence from his partner, he should report it to the relevant authorities	197	17	1	93.4%	8.1%	0.5%
d) Violence against a woman or girl is justified if she dresses like a male.	13	200	1	6.2%	94.8%	0.5%
e) Violence against a woman or girl is justified if she is perceived to be a lesbian.	10	203	1	4.7%	96.2%	0.5%
f) Domestic violence is a private matter and outsiders should not intervene.	62	140	10	29.4%	66.4%	4.7%
Age >25 (n=904)	Agree	Disagree	Neither Agree nor Disagree	Agree	Disagree	Neither Agree nor Disagree
a) Violence against a man or boy is justified if he dresses like a female.	43	845	16	4.8%	93.5%	1.8%
b) Violence against a man or boy is justified if he is perceived to be gay.	29	861	15	3.2%	95.2%	1.7%
c) If a man experiences violence from his partner, he should report it to the relevant authorities	816	70	16	90.3%	7.7%	1.8%
d) Violence against a woman or girl is justified if she dresses like a male.	28	865	13	3.1%	95.7%	1.4%
e) Violence against a woman or girl is justified if she is perceived to be a lesbian.	33	861	8	3.7%	95.2%	0.9%
f) Domestic violence is a private matter and outsiders should not intervene.	285	563	22	31.5%	62.3%	2.4%

Table 52: Agree or disagree with the following statements on violence (Persons with disabilities)

Disability (n=190)	Agree	Disagree	Neither Agree nor Disagree	Agree	Disagree	Neither Agree nor Disagree
a) Violence against a man or boy is justified if he dresses like a female.	16	171	3	8.4%	90.0%	1.6%
b) Violence against a man or boy is justified if he is perceived to be gay.	7	180	2	3.7%	94.7%	1.1%
c) If a man experiences violence from his partner, he should report it to the relevant authorities	169	19	1	88.9%	10.0%	0.5%
d) Violence against a woman or girl is justified if she dresses like a male.	13	175	2	6.8%	92.1%	1.1%
e) Violence against a woman or girl is justified if she is perceived to be a lesbian.	8	181	1	4.2%	95.3%	0.5%
f) Domestic violence is a private matter and outsiders should not intervene.	50	133	5	26.3%	70.0%	2.6%

Table 53: Agree with the following statements on violence (By district, agree only)

Agrees with the following...	Corozal (n=288)	Orange Walk (n=256)	Belize (n=142)	Cayo (n=258)	Stann Creek (n=140)	Toledo (n=148)	Corozal (n=288)	Orange Walk (n=256)	Belize (n=142)	Cayo (n=258)	Stann Creek (n=140)	Toledo (n=148)
a) Violence against a man or boy is justified if he dresses like a female.	3	8	15	14	12	21	1.0%	3.1%	10.6%	5.4%	8.6%	14.2%
b) Violence against a man or boy is justified if he is perceived to be gay.	5	1	13	11	8	13	1.7%	0.4%	9.2%	4.3%	5.7%	8.8%
c) If a man experiences violence from his partner, he should report it to the relevant authorities	275	240	137	237	126	107	95.5%	93.8%	96.5%	91.9%	90.0%	72.3%
d) Violence against a woman or girl is justified if she dresses like a male.	6	8	6	12	7	11	2.1%	3.1%	4.2%	4.7%	5.0%	7.4%
e) Violence against a woman or girl is justified if she is perceived to be a lesbian.	2	4	10	9	10	14	0.7%	1.6%	7.0%	3.5%	7.1%	9.5%
f) Domestic violence is a private matter and outsiders should not intervene.	99	76	38	69	43	59	34.4%	29.7%	26.8%	26.7%	30.7%	39.9%

A3. Surveyor reads: “I will now ask for your opinion about relationships: Whose right is sex in a relationship?”

Table 54: Whose right is sex in a relationship? (By sex)

	Men (n=525)	Women (n=710)	All (n=1235)	Men (n=525)	Women (n=710)	All (n=1235)
Man	42	59	101	8.0%	8.3%	8.2%
Woman	35	52	87	6.7%	7.3%	7.0%
Both	448	599	1047	85.3%	84.4%	84.8%

Table 55: Whose right is sex in a relationship? (Rural vs urban)

	Urban (n=889)	Rural (n=346)	Urban (n=889)	Rural (n=346)
Man	65	36	7.3%	10.4%
Woman	67	20	7.5%	5.8%
Both	757	290	85.2%	83.8%

Table 56: Whose right is sex in a relationship? (By age)

	<20 (n=116)	20-24 (n=215)	25+ (n=904)	<20 (n=116)	20-24 (n=215)	25+ (n=904)
Man	10	25	66	8.6%	11.6%	7.3%
Woman	12	22	53	10.3%	10.2%	5.9%
Both	94	168	785	81.0%	78.1%	86.8%

Table 57: Whose right is sex in a relationship? (Persons with disabilities)

	Persons with disabilities (n=189)	Persons with disabilities (n=189)
Man	18	9.5%
Woman	20	10.6%
Both	151	79.9%

Table 58: Whose right is sex in a relationship? (By ethnicity)

	Mestizo/ Hispanic (n=701)	Creole (n=207)	Maya (n=167)	Garifuna (n=58)	E.Indian (n=27)	Caucasian (n=4)	Asian (n=1)	Others (n=4)	Mixed (n=78)	Mestizo/ Hispanic (n=689)	Creole (n=206)	Maya (n=165)	Garifuna (n=56)	E.Indian (n=27)	Caucasian (n=4)	Asian (n=1)	Others (n=4)	Mixed (n=76)
Man	46	8	38	2	4	0	0		1	6.7%	3.9%	23.0%	3.6%	14.8%	0.0%	0.0%	0.0%	1.3%
Woman	40	20	10	7	2	0	0	1	6	5.8%	9.7%	6.1%	12.5%	7.4%	0.0%	0.0%	25.0%	7.9%
Both	603	178	117	47	21	4	1	3	69	87.5%	86.4%	70.9%	83.9%	77.8%	100.0%	100.0%	75.0%	90.8%

Table 59: Whose right is sex in a relationship? (By district)

	Corozal (n=286)	Orange Walk (n=257)	Belize (n=142)	Cayo (n=262)	Stann Creek (n=140)	Toledo (n=148)	Corozal (n=286)	Orange Walk (n=257)	Belize (n=142)	Cayo (n=262)	Stann Creek (n=140)	Toledo (n=148)
Man	18	17	10	17	8	31	6.3%	6.6%	7.0%	6.5%	5.7%	20.9%
Woman	12	14	12	21	20	8	4.2%	5.4%	8.5%	8.0%	14.3%	5.4%
Both	256	226	120	224	112	109	89.5%	87.9%	84.5%	85.5%	80.0%	73.6%

Table 60: Whose right is sex in a relationship? (Migration status, i.e. country of birth)

	Belize (n=1074)	Mexico (n=10)	Guatemala (n=84)	Honduras (n=32)	El Salvador (n=36)	USA (n=6)	Other (n=12)	Belize (n=1058)	Mexico (n=10)	Guatemala (n=83)	Honduras (n=32)	El Salvador (n=34)	USA (n=6)	Other (n=12)
Man	86	1	6	2	6	0	0	8.1%	10.0%	7.2%	6.3%	17.6%	0.0%	0.0%
Woman	69	0	8	6	2	1	1	6.5%	0.0%	9.6%	18.8%	5.9%	16.7%	8.3%
Both	903	9	69	24	26	5	11	85.3%	90.0%	83.1%	75.0%	76.5%	83.3%	91.7%

A4. Who has the authority and makes decisions in a household or relationship?”

Surveyor reads: “I will now ask for your opinion about relationships: Who has the authority and makes decisions in a household or relationship?”

Table 61: Who has the authority and makes decision in a household or relationship? (By sex)

	Men (n=527)	Women (n=714)	All (n=1241)	Men (n=527)	Women (n=714)	All (n=1241)
Man	82	102	184	15.6%	14.3%	14.8%
Woman	14	26	40	2.7%	3.6%	3.2%
Both	431	586	1017	81.8%	82.1%	82.0%

Table 62: Who has the authority and makes decision in a household or relationship? (Rural vs urban)

	Urban (n=895)	Rural (n=346)	Urban (n=895)	Rural (n=346)
Man	131	53	14.6%	15.3%
Woman	26	14	2.9%	4.0%
Both	738	279	82.5%	80.6%

Table 63: Who has the authority and makes decision in a household or relationship? (By age)

	<20 (n=118)	20-24 (n=215)	25+ (n=908)	<20 (n=118)	20-24 (n=215)	25+ (n=908)
Man	14	34	136	11.9%	15.8%	15.0%
Woman	11	7	22	9.3%	3.3%	2.4%
Both	93	174	750	78.8%	80.9%	82.6%

Table 64: Who has the authority and makes decision in a household or relationship? (Persons with disabilities)

	Persons with disabilities (n=190)	Persons with disabilities (n=190)
Man	30	15.8%
Woman	6	3.2%
Both	154	81.1%

Table 65: Who has the authority and makes decision in a household or relationship? (Ethnicity)

	Mestizo/Hispanic (n=890)	Creole (n=207)	Maya (n=166)	Garifuna (n=58)	E.Indian (n=27)	Caucasian (n=4)	Asian (n=1)	Others (n=4)	Mixed (n=77)	Mestizo/Hispanic (n=690)	Creole (n=207)	Maya (n=166)	Garifuna (n=58)	E.Indian (n=27)	Caucasian (n=4)	Asian (n=1)	Others (n=4)	Mixed (n=77)
Man	88	15	55	4	6				14	12.8%	7.2%	33.1%	6.9%	22.2%	0.0%	0.0%	0.0%	18.2%
Woman	17	11	4	5					3	2.5%	5.3%	2.4%	8.6%	0.0%	0.0%	0.0%	0.0%	3.9%
Both	585	181	107	49	21	4	1	4	60	84.8%	87.4%	64.5%	84.5%	77.8%	100.0%	100.0%	100.0%	77.9%

Table 66: Who has the authority and makes decision in a household or relationship? (By district)

	Corozal (n=288)	Orange Walk (n=257)	Belize (n=142)	Cayo (n=263)	Stann Creek (n=143)	Toledo (n=148)	Corozal (n=288)	Orange Walk (n=257)	Belize (n=142)	Cayo (n=263)	Stann Creek (n=143)	Toledo (n=148)
Man	30	31	10	35	29	49	10.4%	12.1%	7.0%	13.3%	20.3%	33.1%
Woman	6	5	9	11	5	4	2.1%	1.9%	6.3%	4.2%	3.5%	2.7%
Both	252	221	123	217	109	95	87.5%	86.0%	86.6%	82.5%	76.2%	64.2%

A5. Is it the right of a parent to punish or discipline a child?

Surveyor reads: "Parents usually discipline their child the best way they see fit. I would like to ask about your thoughts on how you think a child should be disciplined: Is it the right of a parent to punish or discipline a child?"

Table 67: Is it the right of a parent to punish or discipline a child? (All respondents, male, female)

All (n=1238)	Agree	Disagree	Neither Agree nor Disagree	Agree	Disagree	Neither Agree nor Disagree
Is it the right of a parent to punish or discipline a child in whatever ways he/she sees fit?	575	596	67	46.4%	48.1%	5.4%
Beating a child is not justified in any situation.	354	818	64	28.6%	66.1%	5.2%
There are certain situations in which beating a child is justified	594	606	39	48.0%	48.9%	3.2%
Beating a child is one of the most effective ways to discipline a child.	136	1074	30	11.0%	86.8%	2.4%
The beating that you received as a child has a positive impact on your upbringing.	704	456	64	56.9%	36.8%	5.2%
Men (n=526)	Agree	Disagree	Neither Agree nor Disagree	Agree	Disagree	Neither Agree nor Disagree
Is it the right of a parent to punish or discipline a child in whatever ways he/she sees fit?	241	258	27	45.8%	49.0%	5.1%
Beating a child is not justified in any situation.	147	353	26	27.9%	67.1%	4.9%
There are certain situations in which beating a child is justified	248	260	18	47.1%	49.4%	3.4%
Beating a child is one of the most effective ways to discipline a child.	61	451	15	11.6%	85.7%	2.9%
The beating that you received as a child has a positive impact on your upbringing.	312	182	24	59.3%	34.6%	4.6%
Women (n=712)	Agree	Disagree	Neither Agree nor Disagree	Agree	Disagree	Neither Agree nor Disagree
Is it the right of a parent to punish or discipline a child in whatever ways he/she sees fit?	334	338	40	46.9%	47.5%	5.6%
Beating a child is not justified in any situation.	207	465	38	29.1%	65.3%	5.3%
There are certain situations in which beating a child is justified	346	346	21	48.6%	48.6%	2.9%
Beating a child is one of the most effective ways to discipline a child.	75	623	15	10.5%	87.5%	2.1%
The beating that you received as a child has a positive impact on your upbringing.	392	274	40	55.1%	38.5%	5.6%

Table 68: Is it the right of a parent to punish or discipline a child? (Urban vs rural)

Urban (n=885)	Agree	Disagree	Neither Agree nor Disagree	Agree	Disagree	Neither Agree nor Disagree
Is it the right of a parent to punish or discipline a child in whatever ways he/she sees fit?	433	413	47	57.6%	37.3%	5.1%
Beating a child is not justified in any situation.	267	584	41	30.2%	66.0%	4.6%
There are certain situations in which beating a child is justified	453	417	24	51.2%	47.1%	2.7%
Beating a child is one of the most effective ways to discipline a child.	98	776	21	11.1%	87.7%	2.4%
The beating that you received as a child has a positive impact on your upbringing.	510	330	45	57.6%	37.3%	5.1%
Rural (n=339)	Agree	Disagree	Neither Agree nor Disagree	Agree	Disagree	Neither Agree nor Disagree
Is it the right of a parent to punish or discipline a child in whatever ways he/she sees fit?	142	183	20	41.9%	54.0%	5.9%
Beating a child is not justified in any situation.	87	234	23	25.7%	69.0%	6.8%
There are certain situations in which beating a child is justified	141	189	15	41.6%	55.8%	4.4%
Beating a child is one of the most effective ways to discipline a child.	38	298	9	11.2%	87.9%	2.7%
The beating that you received as a child has a positive impact on your upbringing.	194	126	19	57.2%	37.2%	5.6%

Table 69: Is it the right of a parent to punish or discipline a child? (By age)

Age <20 (n=118)	Agree	Disagree	Neither Agree nor Disagree	Agree	Disagree	Neither Agree nor Disagree
Is it the right of a parent to punish or discipline a child in whatever ways he/she sees fit?	62	50	6	52.5%	42.4%	5.1%
Beating a child is not justified in any situation.	38	75	5	32.2%	63.6%	4.2%
There are certain situations in which beating a child is justified	66	50	2	55.9%	42.4%	1.7%
Beating a child is one of the most effective ways to discipline a child.	17	98	3	14.4%	83.1%	2.5%
The beating that you received as a child has a positive impact on your upbringing.	65	47	6	55.1%	39.8%	5.1%
Age 20-24 (n=114)	Agree	Disagree	Neither Agree nor Disagree	Agree	Disagree	Neither Agree nor Disagree
Is it the right of a parent to punish or discipline a child in whatever ways he/she sees fit?	94	115	6	43.9%	53.7%	2.8%
Beating a child is not justified in any situation.	56	149	10	26.2%	69.6%	4.7%
There are certain situations in which beating a child is justified	118	90	6	55.1%	42.1%	2.8%
Beating a child is one of the most effective ways to discipline a child.	25	188	2	11.7%	87.9%	0.9%
The beating that you received as a child has a positive impact on your upbringing.	126	75	13	58.9%	35.0%	6.1%
Age >25 (n=906)	Agree	Disagree	Neither Agree nor Disagree	Agree	Disagree	Neither Agree nor Disagree
Is it the right of a parent to punish or discipline a child in whatever ways he/she sees fit?	419	431	56	46.2%	47.6%	6.2%
Beating a child is not justified in any situation.	260	594	49	28.7%	65.6%	5.4%
There are certain situations in which beating a child is justified	410	466	31	45.3%	51.4%	3.4%
Beating a child is one of the most effective ways to discipline a child.	94	788	25	10.4%	87.0%	2.8%
The beating that you received as a child has a positive impact on your upbringing.	513	334	45	56.6%	36.9%	5.0%

A6. If you needed to report a situation of violence against yourself or someone you know, who would you feel MOST CONFIDENT in reporting the incident to?

Table 70: If you needed to report a situation of violence against yourself or someone you know, who would you feel most confident in reporting the incident to? (All respondents, male, female)

	Men (n=536)	Women (n=718)	All (n=1254)	Men (n=536)	Women (n=718)	All (n=1254)
Nurse or doctor	1	4	5	0.2%	0.6%	0.4%
Police	330	402	732	61.6%	56.0%	58.4%
Social Worker	47	80	127	8.8%	11.1%	10.1%
Community Health Worker	2	2	4	0.4%	0.3%	0.3%
Community leader/Women leader	11	28	39	2.1%	3.9%	3.1%
Religious leader	3	7	10	0.6%	1.0%	0.8%
Family member	86	126	212	16.0%	17.5%	16.9%
Other	22	41	63	4.1%	5.7%	5.0%
No response	34	28	62	6.3%	3.9%	4.9%

Table 71: If you needed to report a situation of violence against yourself or someone you know, who would you feel most confident in reporting the incident to? (Rural vs urban)

	Urban (n=906)	Rural (n=348)	Urban (n=906)	Rural (n=348)
Nurse or doctor	4	1	0.4%	0.3%
Police	530	202	58.5%	58.0%
Social Worker	91	36	10.0%	10.3%
Community Health Worker	1	3	0.1%	0.9%
Community leader/Women leader	23	16	2.5%	4.6%
Religious leader	7	3	0.8%	0.9%
Family member	160	52	17.7%	14.9%
Other	47	16	5.2%	4.6%
No response	43	19	4.7%	5.5%

Table 72: If you needed to report a situation of violence against yourself or someone you know, who would you feel most confident in reporting the incident to? (By age)

	<20 (n=118)	20-24 (n=215)	25+ (n=921)	<20 (n=118)	20-24 (n=215)	25+ (n=921)
Nurse or doctor	0	0	5	0.0%	0.0%	0.5%
Police	61	114	557	51.7%	53.0%	60.5%
Social Worker	13	15	99	11.0%	7.0%	10.7%
Community Health Worker	0	1	3	0.0%	0.5%	0.3%
Community leader/Women leader	1	7	31	0.8%	3.3%	3.4%
Religious leader	1	1	8	0.8%	0.5%	0.9%
Family member	38	54	120	32.2%	25.1%	13.0%
Other	2	9	52	1.7%	4.2%	5.6%
No response	2	14	46	1.7%	6.5%	5.0%

Table 73: If you needed to report a situation of violence against yourself or someone you know, who would you feel most confident in reporting the incident to? (Persons with disabilities)

	Persons with disabilities (n=190)	Persons with disabilities (n=190)
Nurse or doctor	0	0.0%
Police	107	56.3%
Social Worker	23	12.1%
Community Health Worker	2	1.1%
Community leader/Women leader	5	2.6%
Religious leader	2	1.1%
Family member	31	16.3%
Other	13	6.8%
No response	7	3.7%

Table 74: If you needed to report a situation of violence against yourself or someone you know, who would you feel most confident in reporting the incident to? (Ethnicity)

	Mestizo/ Hispanic (n=701)	Creole (n=207)	Maya (n=167)	Garifuna (n=58)	E.Indian (n=27)	Caucasian (n=4)	Asian (n=1)	Others (n=4)	Mixed (n=78)	DK/NR	Mestizo/ Hispanic (n=701)	Creole (n=207)	Maya (n=167)	Garifuna (n=58)	E.Indian (n=27)	Caucasian (n=4)	Asian (n=1)	Others (n=4)	Mixed (n=78)
Nurse or doctor	2	3	0	0	0	0	0	0	0	0	0.3%	1.4%	0.0%	0.0%	0.0%	0.0%	0.0%	0.0%	0.0%
Police	444	94	98	30	11	2	1	2	46	4	63.3%	45.4%	58.7%	51.7%	40.7%	50.0%	100.0%	50.0%	59.0%
Social Worker	67	27	12	8	4	1		1	7		9.6%	13.0%	7.2%	13.8%	14.8%	25.0%	0.0%	25.0%	9.0%
Community Health Worker		2	1		1						0.0%	1.0%	0.6%	0.0%	3.7%	0.0%	0.0%	0.0%	0.0%
Community leader/Women leader	5	8	22	3	1						0.7%	3.9%	13.2%	5.2%	3.7%	0.0%	0.0%	0.0%	0.0%
Religious leader	4	2		1					3		0.6%	1.0%	0.0%	1.7%	0.0%	0.0%	0.0%	0.0%	3.8%
Family member	107	50	21	16	7			1	9	1	15.3%	24.2%	12.6%	27.6%	25.9%	0.0%	0.0%	25.0%	11.5%
Other	33	14	5		2				8	1	4.7%	6.8%	3.0%	0.0%	7.4%	0.0%	0.0%	0.0%	10.3%
No response	39	7	8		1	1			5	1	5.6%	3.4%	4.8%	0.0%	3.7%	25.0%	0.0%	0.0%	6.4%

Table 75: If you needed to report a situation of violence against yourself or someone you know, who would you feel most confident in reporting the incident to? (By district)

	Corozal (n=291)	Orange Walk (n=262)	Belize (n=143)	Cayo (n=263)	Stann Creek (n=145)	Toledo (n=150)	Corozal (n=291)	Orange Walk (n=262)	Belize (n=143)	Cayo (n=263)	Stann Creek (n=145)	Toledo (n=150)
Nurse or doctor	3		1		1		1.0%	0.0%	0.7%	0.0%	0.7%	0.0%
Police	160	164	72	163	90	83	55.0%	62.6%	50.3%	62.0%	62.1%	55.3%
Social Worker	45	28	12	18	13	11	15.5%	10.7%	8.4%	6.8%	9.0%	7.3%
Community Health Worker			1	1	1	1	0.0%	0.0%	0.7%	0.4%	0.7%	0.7%
Community leader/Women leader	5	1	3	5	5	20	1.7%	0.4%	2.1%	1.9%	3.4%	13.3%
Religious leader	1	1	2	5	1		0.3%	0.4%	1.4%	1.9%	0.7%	0.0%
Family member	42	36	39	49	22	24	14.4%	13.7%	27.3%	18.6%	15.2%	16.0%
Other	19	12	8	14	5	5	6.5%	4.6%	5.6%	5.3%	3.4%	3.3%
No response	16	20	5	8	7	6	5.5%	7.6%	3.5%	3.0%	4.8%	4.0%

Table 76: If you needed to report a situation of violence against yourself or someone you know, who would you feel most confident in reporting the incident to? (Migration status, i.e. country of birth)

	Belize (n=1074)	Mexico (n=10)	Guatemala (n=84)	Honduras (n=32)	El Salvador (n=36)	USA (n=6)	Other (n=12)	Belize (n=1074)	Mexico (n=10)	Guatemala (n=84)	Honduras (n=32)	El Salvador (n=36)	USA (n=6)	Other (n=12)
Nurse or doctor	4	0	0	0	0	0	1	0.4%	0.0%	0.0%	0.0%	0.0%	0.0%	8.3%
Police	604	6	58	26	26	3	9	56.2%	60.0%	69.0%	81.3%	72.2%	50.0%	75.0%
Social Worker	117	2	4	2	1	1	0	10.9%	20.0%	4.8%	6.3%	2.8%	16.7%	0.0%
Community Health Worker	4	0	0	0	0	0	0	0.4%	0.0%	0.0%	0.0%	0.0%	0.0%	0.0%
Community leader/Women leader	29	1	8	0	0	1	0	2.7%	10.0%	9.5%	0.0%	0.0%	16.7%	0.0%
Religious leader	8	0	1	0	1	0	0	0.7%	0.0%	1.2%	0.0%	2.8%	0.0%	0.0%
Family member	195	1	6	3	5	0	2	18.2%	10.0%	7.1%	9.4%	13.9%	0.0%	16.7%
Other	58	0	4	0	1	0	0	5.4%	0.0%	4.8%	0.0%	2.8%	0.0%	0.0%
No response	55	0	3	1	2	1	0	5.1%	0.0%	3.6%	3.1%	5.6%	16.7%	0.0%

P1. If you needed to access services as a result of gender-based violence, where would you be MOST COMFORTABLE accessing these services?

Surveyor reads: "I will now ask you questions about community activities about access to services and community events."

Table 77: If you needed to access services as a result of gender-based violence, where would you be most comfortable accessing these services? (All respondents)

	All respondents (n=718)	All respondents (n=718)
Health system	37	5.2%
Social worker	90	12.5%
Women's department	70	9.7%
Court	10	1.4%
Police	224	31.2%
NGO/ faith-based organization	28	3.9%
Other	148	20.6%
No response	111	15.5%

Table 78: If you needed to access services as a result of gender-based violence, where would you be most comfortable accessing these services? (Rural vs urban)

	Urban (n=525)	Rural (n=193)	Urban (n=525)	Rural (n=193)
Health system	24	13	4.6%	6.7%
Social worker	69	21	13.1%	10.9%
Women's department	52	18	9.9%	9.3%
Court	7	3	1.3%	1.6%
Police	170	54	32.4%	28.0%
NGO/ faith-based organization	20	8	3.8%	4.1%
Other	99	49	18.9%	25.4%
No response	84	27	16.0%	14.0%

Table 79: If you needed to access services as a result of gender-based violence, where would you be most comfortable accessing these services? (Persons with disabilities)

	Persons with disabilities (n=190)	Persons with disabilities (n=190)
Health system	8	6.5%
Social worker	20	16.1%
Women's department	14	11.3%
Court	3	2.4%
Police	35	28.2%
NGO/ faith-based organization	4	3.2%
Other	20	16.1%
No response	20	16.1%

Table 80: If you needed to access services as a result of gender-based violence, where would you be most comfortable accessing these services? (By district)

	Corozal (n=166)	Orange Walk (n=143)	Belize (n=87)	Cayo (n=154)	Stann Creek (n=82)	Toledo (n=86)	Corozal (n=166)	Orange Walk (n=143)	Belize (n=87)	Cayo (n=154)	Stann Creek (n=82)	Toledo (n=86)
Health system	9	8	4	6	3	7	5.4%	5.6%	4.6%	3.9%	3.7%	8.1%
Social worker	27	18	10	13	6	16	16.3%	12.6%	11.5%	8.4%	7.3%	18.6%
Women's department	14	7	27	5	10	7	8.4%	4.9%	31.0%	3.2%	12.2%	8.1%
Court	3	2	1	1	0	3	1.8%	1.4%	1.1%	0.6%	0.0%	3.5%
Police	38	48	23	61	24	30	22.9%	33.6%	26.4%	39.6%	29.3%	34.9%
NGO/ faith-based organization	3	3	5	8	7	2	1.8%	2.1%	5.7%	5.2%	8.5%	2.3%
Other	35	43	3	29	24	14	21.1%	30.1%	3.4%	18.8%	29.3%	16.3%
No response	37	14	14	31	8	7	22.3%	9.8%	16.1%	20.1%	9.8%	8.1%

P2. Are you aware of any activities in your community that address gender equality/the rights of women and girls especially regarding sexuality and reproductive health over the past 12 months?

Table 81: Are you aware of any activities in your community that address gender equality/the rights of women and girls especially regarding sexuality and reproductive health over the past 12 months? (By sex)

	Male (n=536)	Female (n=718)	Total (n=1254)	Male (n=536)	Female (n=718)	Total (n=1254)
Yes	22	40	62	1.8%	3.2%	4.9%
No	482	649	1131	38.4%	51.8%	90.2%
Not sure	15	19	34	1.2%	1.5%	2.7%
No reply	17	10	27	1.4%	0.8%	2.2%

P2.a. List the activities that you were aware of that relate to sexual and reproductive health during the past 12 months

Table 82: List the activities that you were aware of that relate to sexual and reproductive health during the past 12 months

Source	Number of times cited
Belize Family Life Association activities	7
Church activities	2
Hospital/health centre activities	5
Police/Domestic Violence Unit	2
Community outreach	5
Television	1
Youth services	3
Other groups (CSOs, forums, schools)	11

P3. Have you participated in any community activities regarding gender equality/the rights of women and girls especially regarding sexuality and reproduction in the past 12 months?

Table 83: Have you participated in any community activities regarding gender equality/the rights of women and girls especially regarding sexuality and reproduction in the past 12 months? (By sex)

	Male (n=536)	Female (n=718)	Total (n=1254)	Male (n=536)	Female (n=718)	Total (n=1254)
Yes	1	8	9	0.2%	1.1%	0.7%
No	518	700	1218	96.6%	97.5%	97.1%
No reply	17	10	27	3.2%	1.4%	2.2%

Table 84: Individuals who have participated in any community activities regarding gender equality/the rights of women and girls especially regarding sexuality and reproduction in the past 12 months (By age, n=9)

<20	20-24	25+
11.1%	11.1%	77.8%

Table 85: Individuals who have participated in any community activities regarding gender equality/the rights of women and girls especially regarding sexuality and reproduction in the past 12 months (Rural vs urban, n=9)

Urban	Rural
77.8%	22.2%

Table 86: Individuals who have participated in any community activities regarding gender equality/the rights of women and girls especially regarding sexuality and reproduction in the past 12 months (By district, n=9)

Corozal	Orange Walk	Belize	Cayo	Stann Creek	Toledo
11.1%	11.1%	11.1%	0.0%	33.3%	33.3%

P3.a. List activities that you have participated in during the last 12 months

Table 87: List of activities that respondents report participating in during the last 12 months

	Activity
Hospital activities/ workshops	TV show
Human Papilloma Virus campaign through school	POWA workshop on how to use a condom
PETAL workshop	Advocacy and literacy project, leadership and how to start own business
HIV/AIDS awareness workshop	Radio talk show
National HIV/AIDS commission stigma and discrimination workshop	HUMANA Human and women's rights workshop
Toledo Maya Women's Council workshop on uplifting maya women	Women discussion panel

P4. How often did you attend these activities in the past 12 months?

Table 88: How often have you participated in any community activities regarding gender equality/the rights of women and girls especially regarding sexuality and reproduction in the past 12 months? (By sex)

	Male (n=1)	Female (n=8)	Total	Male (n=9)	Female	Total
Weekly	0	2	2	0.0%	25.0%	22.2%
Monthly	1	1	2	100.0%	12.5%	22.2%
Every few months	0	3	3	0.0%	37.5%	33.3%
Once	0	2	2	0.0%	25.0%	22.2%

P5. Are you aware of any activities in your community that address gender equality/the rights of women and girls especially regarding addressing violence in relationships between men and women/girls in the past 12 months?

Table 89: Are you aware of any activities in your community that address gender equality/the rights of women and girls especially regarding addressing violence in relationships between men and women/girls in the past 12 months? (By sex)

	Male (n=536)	Female (n=718)	Total (n=1254)	Male (n=536)	Female (n=718)	Total (n=1254)
Yes	21	31	52	1.7%	2.5%	4.1%
No	493	663	1156	39.3%	52.9%	92.2%
Not sure	7	15	22	0.6%	1.2%	1.8%
No reply	15	9	24	1.2%	0.7%	1.9%

P5.a. List activities that you are aware of that address violence in relationships between men and women/girls during the past 12 months

Table 90: List of activities that respondents report awareness of during the last 12 months

Source	Number of times cited
BFLA	2
Church	2
Community meetings or activities	5
TV/Radio	5
Social Media	1
Legal services (courts, police)	3
Health/Social Public Services	4
POWA	3
16 days of activism	1
Other groups (CSOs, forums, schools)	15

P6. Have you participated in any of the activities in your community addressing violence in relationships between men and women/girls in the past 12 months?

Table 91: Have you participated in any of the activities in your community addressing violence in relationships between men and women/girls in the past 12 months? (By sex)

	Male (n=536)	Female (n=718)	Total (n=1254)	Male (n=536)	Female (n=718)	Total (n=1254)
Yes	6	11	17	1.1%	1.5%	1.4%
No	15	20	35	2.8%	2.8%	2.8%
No reply	515	687	1202	96.1%	95.7%	95.9%

Table 92: Individuals who have participated in any of the activities in your community addressing violence in relationships between men and women/girls in the past 12 months (By age, n=17)

<20	20-24	25+
0.0%	11.8%	88.2%

Table 93: Individuals who have participated in any of the activities in your community addressing violence in relationships between men and women/girls in the past 12 months? (Rural vs urban, n=17)

Urban	Rural
76.5%	23.5%

Table 94: Individuals who have participated in any of the activities in your community addressing violence in relationships between men and women/girls in the past 12 months? (By district, n=17)

Corozal	Orange Walk	Belize	Cayo	Stann Creek	Toledo
35.3%	5.9%	17.6%	5.9%	17.6%	17.6%

P6.a. List the activities that you have participated in during the past 12 months.

Table 95: List of activities that respondents report participating in during the last 12 months

Activity	
Church activity	Talk shows (TV)
Domestic Violence Unit	Teenager mentoring
Kim Simples Berrow Awareness Activity	BFLA training
PETAL workshop	Community women's vigil
POWA workshop	Counselling sessions
Sessions with NDAC, HECOPAB	Radio talk shows

P7. How often did you attend these activities in the past 12 months?

Table 96: How often did you attend any community activities regarding addressing violence in relationships between men and women/girls in the past 12 months? (By sex)

	Male	Female	Total	Male	Female	Total
Weekly	0	3	3	0.0%	0.4%	0.2%
Monthly	0	2	2	0.0%	0.3%	0.2%
Every few months	3	3	6	0.6%	0.4%	0.5%
Once	3	3	6	0.6%	0.4%	0.5%
n/a	530	707	1237	98.9%	98.5%	98.6%

P8. Of all the activities you were aware of, how many of the planned activities did you attend?

Table 97: Of all the activities you were aware of, how many of the planned activities did you attend?

	Male	Female	Total	Male	Female	Total
All	2	4	6	0.4%	0.6%	0.5%
More than half	2	2	4	0.4%	0.3%	0.3%
Half	2	5	7	0.4%	0.7%	0.6%
Less than half	530	707	1237	98.9%	98.5%	98.6%

P10. Did you attend any of these activities with your partner or on your own?

Table 98: Did you attend any of these activities with your partner or on your own?

	Male (n=4)	Female (n=7)	Total (n=11)	Male (n=4)	Female (n=7)	Total (n=11)
With Partner	1	3	4	25.0%	42.9%	36.4%
Alone	3	4	7	75.0%	57.1%	63.6%

P11. Why have you NOT participated in any of the activities in your community addressing violence in relationships between men and women/girls in the past 12 months?

Table 99: Why did you not attend any of the activities in your community addressing violence in relationships between men and women/girls in the past 12 months?

Reason for not participating	Number of respondents
No time/not available	305
No interest	105
Sick	16
Too embarrassed	3
No transportation	2
Other	851

P12. In your daily life over the past 12 months, have you heard or seen anything that stereotypes women or girls OR CREATES OR REINFORCES harmful social beliefs or practices for women and girls?

Table 100: Respondents who have heard or seen anything that stereotypes women or girls or creates or reinforces harmful social beliefs or practices for women and girls in the past 12 months (by sex)

Men (n=536)	Women (n=718)	All (n=1254)	Men (n=536)	Women (n=718)	All (n=1254)
93	140	233	17.4%	19.5%	18.6%

Table 101: Respondents who have heard or seen anything that stereotypes women or girls or creates or reinforces harmful social beliefs or practices for women and girls in the past 12 months (rural vs urban)

Urban (n=906)	Rural (n=348)	Urban (n=906)	Rural (n=348)
174	59	19.2%	17.0%

Table 102: Respondents who have heard or seen anything that stereotypes women or girls or creates or reinforces harmful social beliefs or practices for women and girls in the past 12 months (by age)

<20 (n=118)	20-24 (n=215)	25+ (n=921)	<20 (n=118)	20-24 (n=215)	25+ (n=921)
26	37	170	22.0%	17.2%	18.5%

Table 103: Respondents who have heard or seen anything that stereotypes women or girls or creates or reinforces harmful social beliefs or practices for women and girls in the past 12 months (persons with disabilities)

Persons with disabilities (n=190)	Persons with disabilities (n=190)
136	71.6%

Table 104: Respondents who have heard or seen anything that stereotypes women or girls or creates or reinforces harmful social beliefs or practices for women and girls in the past 12 months (by ethnicity)

Mestizo/Hispanic (n=701)	Creole (n=207)	Maya (n=167)	Garifuna (n=58)	E.Indian (n=27)	Caucasian (n=4)	Asian (n=1)	Others (n=4)	Mixed (n=78)
127 (18.1%)	52 (25.1%)	23 (13.8%)	9 (15.5%)	5 (18.5%)	3 (75.0%)	0 (0.0%)	0 (0.0%)	14 (17.9%)

Table 105: Respondents who have heard or seen anything that stereotypes women or girls or creates or reinforces harmful social beliefs or practices for women and girls in the past 12 months (by district)

Corozal (n=291)	Orange Walk (n=262)	Belize (n=143)	Cayo (n=263)	Stann Creek (n=145)	Toledo (n=150)
83 (28.5%)	31 (11.8%)	33 (23.1%)	36 (13.7%)	22 (15.2%)	28 (18.7%)

Table 106: Respondents who have heard or seen anything that stereotypes women or girls or creates or reinforces harmful social beliefs or practices for women and girls in the past 12 months (by migration status, i.e., country of birth)

Belize (n=1074)	Mexico (n=10)	Guatemala (n=84)	Honduras (n=32)	El Salvador (n=36)	USA (n=6)	Other (n=12)
212 (19.7%)	1 (10.0%)	10 (11.9%)	4 (12.5%)	2 (5.6%)	3 (50.0%)	1 (8.3%)

P13. Please tell us how or where you heard or saw anything related to stereotyping

Table 107: How or where respondents heard or saw anything related to stereotyping (by sex)

	Men (n=93)	Women (n=140)	All (n=233)	Men (n=93)	Women (n=140)	All (n=233)
TV	11	19	30	11.8%	13.6%	12.9%
Radio	3	6	9	3.2%	4.3%	3.9%
Print Media (newspapers and magazines)	0	0	0	0.0%	0.0%	0.0%
Advertisement	1	2	3	1.1%	1.4%	1.3%
Social Media	29	34	63	31.2%	24.3%	27.0%
Other (specify)	62	102	164	66.7%	72.9%	70.4%

Table 108: How or where respondents heard or saw anything related to stereotyping (rural vs urban)

	Urban (n=174)	Rural (n=59)	Urban (n=174)	Rural (n=59)
TV	26	4	14.9%	6.8%
Radio	7	2	4.0%	3.4%
Print Media (newspapers and magazines)	0	0	0.0%	0.0%
Advertisement	3	0	1.7%	0.0%
Social Media	48	15	27.6%	25.4%
Other (specify)	120	44	69.0%	74.6%

Table 109: How or where respondents heard or saw anything related to stereotyping (by age)

	<20 (n=26)	20-24 (n=37)	25+ (n=170)	<20 (n=26)	20-24 (n=37)	25+ (n=170)
TV	2	5	23	7.7%	13.5%	13.5%
Radio	1	0	8	3.8%	0.0%	4.7%
Print Media (newspapers and magazines)	0	0	0	0.0%	0.0%	0.0%
Advertisement	0	1	2	0.0%	2.7%	1.2%
Social Media	6	19	38	23.1%	51.4%	22.4%
Other (specify)	19	22	123	73.1%	59.5%	72.4%

Table 110: How or where respondents heard or saw anything related to stereotyping (persons with disabilities)

	Persons with disabilities (n=44)	Persons with disabilities (n=44)
TV	9	20.5%
Radio	1	2.3%
Print Media (newspapers and magazines)	0	0.0%
Advertisement	0	0.0%
Social Media	4	9.1%
Other (specify)	23	52.3%

Table 111: How or where respondents heard or saw anything related to stereotyping (by ethnicity)

	Mestizo/ Hispanic (n=127)	Creole (n=52)	Maya (n=23)	Garifuna (n=9)	E.Indian (n=5)	Caucasian (n=3)	Asian (n=0)	Others (n=0)	Mixed (n=14)
TV	11 (8.7%)	8 (15.4%)	3 (13.0%)	2 (22.2%)	2 (20.0%)	0 (0.0%)	0 (0.0%)	0 (0.0%)	5 (35.7%)
Radio	4 (3.1%)	2 (3.8%)	2 (8.7%)	0 (0.0%)	0 (0.0%)	0 (0.0%)	0 (0.0%)	0 (0.0%)	1 (7.1%)
Print Media (newspapers and magazines)	0 (0.0%)	0 (0.0%)	0 (0.0%)	0 (0.0%)	0 (0.0%)	0 (0.0%)	0 (0.0%)	0 (0.0%)	0 (0.0%)
Advertisement	1 (0.8%)	0 (0.0%)	0 (0.0%)	1 (11.1%)	0 (0.0%)	0 (0.0%)	0 (0.0%)	0 (0.0%)	1 (7.1%)
Social Media	29 (22.8%)	19 (36.5%)	5 (21.7%)	2 (22.2%)	4 (80.0%)	0 (0.0%)	0 (0.0%)	0 (0.0%)	4 (28.6%)
Other (specify)	95 (74.8%)	34 (65.4%)	15 (65.2%)	5 (55.6%)	3 (60.0%)	3 (100.0%)	0 (0.0%)	0 (0.0%)	9 (64.3%)

Table 112: How or where respondents heard or saw anything related to stereotyping (by district)

	Corozal (n=83)	Orange Walk (n=31)	Belize (n=33)	Cayo (n=36)	Stann Creek (n=22)	Toledo (n=28)
TV	8 (9.6%)	3 (9.7%)	4 (12.1%)	6 (16.7%)	3 (13.6%)	6 (21.4%)
Radio	2 (2.4%)	4 (12.9%)	0 (0.0%)	0 (0.0%)	0 (0.0%)	3 (10.7%)
Print Media (newspapers and magazines)	0 (0.0%)	0 (0.0%)	0 (0.0%)	0 (0.0%)	0 (0.0%)	0 (0.0%)
Advertisement	0 (0.0%)	0 (0.0%)	1 (3.0%)	0 (0.0%)	1 (4.5%)	1 (3.6%)
Social Media	19 (22.9%)	9 (29.0%)	17 (51.5%)	8 (22.2%)	4 (18.2%)	6 (21.4%)
Other (specify	65 (78.3%)	22 (71.0%)	18 (54.5%)	26 (72.2%)	17 (77.3%)	16 (57.1%)

Table 113: How or where respondents heard or saw anything related to stereotyping (by migration status i.e., country of birth)

	Belize (n=212)	Mexico (n=1)	Guatemala (n=10)	Honduras (n=4)	El Salvador (n=2)	USA (n=3)	Other (n=1)
TV	25 (11.8%)	1 (100.0%)	2 (20.0%)	1 (25.0%)	1 (50.0%)	0 (0.0%)	0 (0.0%)
Radio	7 (3.3%)	0 (0.0%)	0 (0.0%)	2 (50.0%)	0 (0.0%)	0 (0.0%)	0 (0.0%)
Print Media (newspapers and magazines)	0 (0.0%)	0 (0.0%)	0 (0.0%)	0 (0.0%)	0 (0.0%)	0 (0.0%)	0 (0.0%)
Advertisement	3 (1.4%)	0 (0.0%)	0 (0.0%)	0 (0.0%)	0 (0.0%)	0 (0.0%)	0 (0.0%)
Social Media	61 (28.8%)	0 (0.0%)	0 (0.0%)	2 (50.0%)	0 (0.0%)	0 (0.0%)	0 (0.0%)
Other (specify	150 (70.8%)	0 (0.0%)	8 (80.0%)	1 (25.0%)	1 (50.0%)	1 (100.0%)	1 (100.0%)

P14. What do you do if you witness, hear about, or learn of domestic violence or family violence happening to someone you know?

Surveyor reads: "I would like to ask you some questions about difficulties you may have, including disabilities and longstanding illnesses."

Table 114: What do you do if you witness, hear about, or learn of domestic violence or family violence happening to someone you know? (All respondents)

	All respondents (n=913)	All respondents (n=913)
Inform relevant authorities	405	44.4%
Speak to perpetrator	94	10.3%
Inform survivor family/ friends	37	4.1%
Provide survivor info on health, legal or psychological services	52	5.7%
Accompany survivor to police/ authorities	77	8.4%
Accompany survivor to hospital/ health services	4	0.4%
Help ID other services/ resources (shelter, food assistance)	120	13.1%
Do nothing	35	3.8%
Other	66	7.2%
Don't know/ No reply	23	2.5%

Table 115: What do you do if you witness, hear about, or learn of domestic violence or family violence happening to someone you know? (Rural vs urban)

	Urban (n=662)	Rural (n=251)	Urban (n=662)	Rural (n=251)
Inform relevant authorities	302	103	45.6%	41.0%
Speak to perpetrator	66	28	10.0%	11.2%
Inform survivor family/ friends	26	11	3.9%	4.4%
Provide survivor info on health, legal or psychological services	40	12	6.0%	4.8%
Accompany survivor to police/ authorities	53	24	8.0%	9.6%
Accompany survivor to hospital/ health services	3	1	0.5%	0.4%
Help ID other services/ resources (shelter, food assistance)	86	34	13.0%	13.5%
Do nothing	24	11	3.6%	4.4%
Other	43	23	6.5%	9.2%
Don't know/ No reply	19	4	2.9%	1.6%

Table 116: What do you do if you witness, hear about, or learn of domestic violence or family violence happening to someone you know? (Disability status)

	Persons with disabilities (n=160)	Persons with disabilities (n=160)
Inform relevant authorities	65	40.6%
Speak to perpetrator	25	15.6%
Inform survivor family/ friends	5	3.1%
Provide survivor info on health, legal or psychological services	10	6.3%
Accompany survivor to police/ authorities	13	8.1%
Accompany survivor to hospital/ health services	0	0.0%
Help ID other services/ resources (shelter, food assistance)	18	11.3%
Do nothing	9	5.6%
Other	8	5.0%
Don't know/ No reply	7	4.4%

Table 117: What do you do if you witness, hear about, or learn of domestic violence or family violence happening to someone you know? (By district)

	Corozal (n=206)	Orange Walk (n=194)	Belize (n=115)	Cayo (n=204)	Stann Creek (n=90)	Toledo (n=104)	Corozal (n=206)	Orange Walk (n=194)	Belize (n=115)	Cayo (n=204)	Stann Creek (n=90)	Toledo (n=104)
Inform relevant authorities	96	93	53	76	45	42	46.6%	47.9%	46.1%	37.3%	50.0%	40.4%
Speak to perpetrator	8	15	15	21	11	24	3.9%	7.7%	13.0%	10.3%	12.2%	23.1%
Inform survivor family/ friends	6	8	6	9	1	7	2.9%	4.1%	5.2%	4.4%	1.1%	6.7%
Provide survivor info on health, legal or psychological services	25	10	4	11	1	1	12.1%	5.2%	3.5%	5.4%	1.1%	1.0%
Accompany survivor to police/ authorities	6	9	8	45	5	4	2.9%	4.6%	7.0%	22.1%	5.6%	3.8%
Accompany survivor to hospital/ health services	1	1	1			1	0.5%	0.5%	0.9%	0.0%	0.0%	1.0%
Help ID other services/ resources (shelter, food assistance)	37	20	12	25	11	15	18.0%	10.3%	10.4%	12.3%	12.2%	14.4%
Do nothing	11	8	1	3	4	8	5.3%	4.1%	0.9%	1.5%	4.4%	7.7%
Other	11	26	11	9	7	2	5.3%	13.4%	9.6%	4.4%	7.8%	1.9%
Don't know/ No reply	5	4	4	5	5		2.4%	2.1%	3.5%	2.5%	5.6%	0.0%